

# The Belleville Times

News

52ND YEAR, NO. 29

Second Class Postage  
paid at Newark, N. J.

BELLEVILLE, N. J., THURSDAY, JULY 19, 1962

Telephone Plymouth 9-3200

10¢ Per Copy

## POLICE MOVE QUICKLY IN DOPE WAR

### Councilers Ponder Administrative Code

When Belleville's new Town Council holds its second regular meeting Tuesday night the new administrative code is expected to be one of the most important items on the agenda, but whether it will be ready for adoption is a matter of conjecture. Mayor Robert M. Laterza said yesterday he hoped it would be ready but added that it is such a lengthy document containing possible points of disagreement among the Councilmen that this is unlikely.

### Secret Ballot Question To Be Resolved Later



HARRY J. SULLIVAN

Harry J. Sullivan, Belleville Democratic municipal chairman, told The Times-News this week he will learn the views of his local committee before adopting a position on the method of electing chairmen.

Whether this should be done by open or secret ballot is a question currently being argued by the County Committee for election of a county chairman.

Both the Belleville Democratic Committee and the Essex County Democratic Committee are currently operating without a constitution and by-laws, which among other things would provide election rules, and this lack has been sharply criticized in some quarters. The County Committee has now come up with a preliminary draft of such operating rules and is expected to adopt it in one form or another at its September meeting.

Sullivan said he believed his local committee would probably adopt a constitution and by-laws of its own following the adoption of the same thing by the county, and that the local rules would in all likelihood follow the county rules with perhaps some minor variations.

Sullivan, a former Belleville commissioner, is now under sheriff of Essex County.

### Map Page

Vincent J. Cirelli of 80 Wilber Street won the \$5 prize offered last week for correct identification of the person circled in the picture on the Map Page.

The picture was taken at Tanager's Shoe Shop, 141 Washington Avenue, and encircled was Steve Keleman of 30 Melwex Street. The cooperating merchant for the Map Page picture was William C. Smith, the optician with offices at 140 Washington Avenue.

This week on the Map Page will be found another picture on which our readers may test their skill and memory. The Cooperating Merchant is the Glass Company at 385 Washington Avenue. Turn now to the Map Page and try your luck. It's lots of fun trying to make an identification, and if you're correct and first you will win \$5. Be sure to follow the rules.

Identify the person circled in the picture and name the place where the picture was taken. Please note that the answer must be delivered in person at the office of The Times, 246 Washington Avenue, or by mail. Phone calls will not be accepted.

(Continued On Page 4)

### Golden Amazes All By Move On Appointments

Councilman James R. Golden this week surprised Belleville by calling for the retention on a permanent basis of three local office holders now serving on a temporary basis. The men are Town Clerk Eugene G. Barnett, Town Attorney Thomas C. D'Avella and Town Assessor Emanuel DeNoia Jr.

At the organization meeting of the new Town Council July 1 Golden sought to have Theodore Bellet named Town Attorney and Hugh Clark named to the assessor's post. He received no support from the other four on the Council in these moves. In the days of the Town Commission Golden was frequently critical of both D'Avella and DeNoia. He was especially caustic of DeNoia for his failure to assess the synagogue property owned by former Commissioner Robert C. Gruhin.

With respect to Barnett, Golden did call for his permanent appointment to the Clerk's post at the July 1 meeting. However, Belleville observers pointed out that this was hardly consistent with Golden's previous emphasis on the necessity for economy in Town government. It is known that Mayor Robert M. Laterza and Councilmen Thomas P. Greco and Vincent Strumolo want to eliminate the Town Clerk's job and let the new Town Manager assume the duties of the clerk at a saving of the clerk's salary of \$8,500.

### An Editorial

#### Laterza's Narcotics Drive

In his inaugural speech Mayor Robert M. Laterza declared open war on narcotics peddlers and users. Some cynics — a handful of disgruntled politicians bent upon downgrading our new Mayor — slyly suggested perhaps Laterza just made the speech for publicity purposes, that after all there was no narcotics problem in Belleville.

This week our detectives picked up a car load of youngsters and booked them on narcotics charges. The story and a picture of the evidence appears elsewhere on this page.

South of our border Newark's new Mayor Hugh Addonizio and his Chief of Police have been issuing daily press releases exhorting parents to help them in the fight against "goof balls" and narcotics.

Last week at the request of Mayor Laterza our Town Council adopted a resolution creating a 15-member Advisory Youth Council which is expected to be a vital force in our fight against narcotics.

This week Mayor Laterza urged Mayor Addonizio of Newark to convene a meeting of mayors of all Essex municipalities to discuss the "goof-ball" and narcotics menace. Laterza says the problem crosses town boundaries. He further believes suburban communities could benefit from the special knowledge of Newark's narcotics squad. The proposal is an excellent suggestion which should redound to the advantage of our people. Laterza should be commended for his intense interest in the narcotics problem. Operating a large pharmacy, Laterza undoubtedly has more knowledge on the ill effects of narcotics than the average public official. This circumstance stands our citizens in good stead as this young Mayor goes about his chosen task of remaking Belleville's image.

When the juvenile arrests were made this week Mayor Laterza said "our chief of police and his hard working detective staff deserve all the credit for the apprehension. They are aware of the narcotics problem and I am happy to report to the people of our community that our police department is cooperating 100 per cent in our effort to stamp out the narcotics scourge." Laterza makes a valid point. We congratulate our police department for its fine work and support of the aims of our new Town Council.

For the first time in this century we have a police department that is not obliged to take orders from a political boss. As with all departments of local government, under the Faulkner Act as applied to our Council-Manager form of government, the Police Department is directly responsible to the Town Manager — a non-political individual. This arrangement should produce higher department morale and greater efficiency.



GOVERNOR HUGHES

### Laterza Glad As Governor Signs Dope Bills

Mayor Robert M. Laterza publicly congratulated Governor Richard J. Hughes Tuesday afternoon as soon as word was received in Belleville that the Governor had promptly signed two bills aimed at cutting the supply and use of "goofballs" and other habit-forming drugs.

The Governor told newsmen as he signed the measures, "I want the enforcement to be just as tough as nails."

Under the first bill the State Health Commissioner is given authority to classify certain habit-forming non-narcotic drugs as narcotic drugs, thereby regulating their control and sale.

The second bill makes it a crime to possess certain hypnotic or sleep-inducing pills or barbiturates which are not narcotics. Hughes said the bills will provide a powerful new weapon to law enforcement authorities in the battle against drug addiction.

#### TO VISIT SCOUT CAMP

Belleville Scout leaders, committeemen, commissioners and wives and friends will visit Camp Mohican, the summer training center of Robert Treat Council, Boy Scouts of America, in the Kittatinny Mountains at Blairstown, Wednesday, July 25, as designated as Scouters Day at the Camp. Ernest Arvidson, the Belleville District chairman and Harry Winfield, the Scout Commissioner, will head the Belleville delegation.

### Detectives Take Five Youths Into Custody For Possessing Narcotic s



MAYOR LATERZA congratulated Detective Hugh J. O'Toole in the picture above for his part in apprehending five youths on Belleville Avenue last Thursday with narcotics and equipment. Police Chief Charles H. McGinnis looks on. The picture at the left shows what O'Toole and his companion detective Michael Marotti took in the hit. There are eight decks of heroin, which sell for \$5 each, a "cooker", which is similar to an inverted bottle cap and into which the heroin is placed. The match book shown is an important part of the procedure, for a match is held under the cooker to heat the dope. The eyepicker and hypodermic needle complete the outfit.



### Belleville Police Charge Man With Grand Larceny

Frank Stabile of Bloomfield has signed a statement for the Belleville Police in which he alleges that his brother, Michael Stabile of 349 Passaic Avenue, Nutley, gave him a Thor Jackhammer to sell. The implement is a pneumatic drill used to break up paving material. On the strength of the statement the police booked Michael Stabile on a charge of grand larceny. Michael refused to make any statement, other than to give the police his name and address. He is free in \$500 bail.

The jackhammer, valued by the police at \$450 belonged to the Clayburn Constructing Co. of Long Island City. The firm was engaged in a construction project at the Liquid Carbonic Division of General Dynamics Corp., 630 Washington Avenue, Belleville, at the time of the disappearance of the implement.

A hearing has been set for Thursday, July 26, at the Municipal Court in Belleville. Grand larceny complaints are automatically referred to the Essex County Grand Jury for processing. Conviction carries with it a fine up to \$2,000 or seven years' imprisonment or both plus a loss of voting privileges.

Cases involving values of \$200 or less are classified as petty larceny and convictions are punishable by fines up to \$1,000 or three years' imprisonment or both.

Petty larceny is a misdemeanor, while grand larceny is a high misdemeanor.

It is reported that efforts have been made in the Stabile case to downgrade the charge to petty larceny by reducing the value of the jackhammer to \$200.

Additional reports indicate the police are prepared to reduce the value to \$200 in exchange for a guilty plea.

### Mayor Says He's Gratiified At Progress

The Police Department acted quickly last week following Mayor Robert M. Laterza's inauguration day pledge to drive the narcotics peddlers out of Belleville.

Last Thursday night two alert detectives nabbed five youths in a car at Belleville Avenue and Smith Street and confiscated eight decks of heroin, a hypodermic needle and other narcotics equipment.

Two of the youths were juveniles, each 17, and were released in the custody of their parents. They were both residents of Belleville.

The others were Robert A. Paley, 18, of Elizabeth; Frank Siciliano, 21, of 81 Clinton Street, Belleville; and Ralph A. Belverio, 20, of 63 Naples Avenue, Belleville. Belverio was out on bail on a charge of breaking and entering in Verona at the time of the arrest Thursday.

The arresting detectives were Hugh J. O'Toole and Michael Marotti. They were acting under the direction of Acting Sergeant Detective Nicholas J. Mariano.

Mayor Laterza was highly gratified at the prompt police crackdown. He made a special trip to police headquarters Friday to commend Police Chief Charles H. McGinnis and the detectives who made the arrests.

"This is excellent work," he said. "We must now keep it up until Belleville is completely free of this menace to the youths of our community."

The Mayor promised McGinnis every possible cooperation.

"If you need help of any kind, let me know," he told the police chief.

At the July 19 meeting of the new Town Council Laterza suggested the formation of an Advisory Youth Council to help, together with other agencies, to cope with all the problems facing the young people of Belleville, including the problem of narcotics. It was a suggestion the Council approved promptly. Fifteen persons will be named to the advisory group.

The Mayor said he also intended to call on the Mayors of Essex County as the body to work toward pooling the resources of each of the 22 communities in a joint effort to clean up the entire area and get rid of the narcotics scourge.

### Dr. W. H. Stone Dies At His Summer Home

Dr. Winfield H. Stone of 366 Union Avenue, Belleville, died, after a long illness, Tuesday morning, July 19, at his summer home, Laurel Lake, Fitzwilliam, N. H.

He was born in Marlboro, N. H., August 29, 1881. He was a direct descendant of many of the families who founded New England.

After teaching in New England for 12 years, Dr. Stone came to East Side High School, Newark, as a teacher of mathematics, where he taught for 32 years. For 12 years after his retirement from the Newark system he was head of the Mathematics Department in Bloomfield College.

His interest in high school athletics will be remembered by many.

Dr. Stone was active in establishing Fessenden Memorial Presbyterian Church of Belleville. As a charter member of this church, he became the first treasurer, and held the office for 37 years.

He is survived by his wife, Christabel Collins Stone, daughter Marion, wife of the late Howard W. Shay; grandchildren Marjorie C. Adams and Howard W. Shay; and great-granddaughter, Kim Charlotte, daughter of Marjorie C. and John W. Adams.

### Grand Opening At Grand Union



An elaborate new Grand Union Supermarket opened yesterday just over the Belleville line at Franklin Avenue and Harrison Street, Nutley.

Shoppers jammed the store all day long, taking advantage of the many specials offered.

### New Grand Union Market Opens On Franklin Avenue

Grand Union opened its new superstore in New Jersey food store on Franklin Avenue at Harrison Street. Completely air-conditioned, the new Grand Union also offers complete lines of fresh meats, produce, dairy

Special features of the Nutley market include a delicatessen section and full displays of Italian, Kosher and Gourmet foods.




Designed to serve as a one-stop shopping center for all family food needs, the new Grand Union also offers complete lines of fresh meats, produce, dairy

(Continued On Page 4)



\$\$\$\$\$\$

## Rambler Dealers Are Celebrating the Best 9-Month Sales in History—Smashing All Records—And Now... The Savingest Days of the Year are Here!

<p>Savingest Days on <b>RAMBLER AMERICAN</b> Compact Economy King</p> 	<p>American 2-Door Deluxe Sedan—compact handling, family size. And Rambler American is the top economy run winner in the U. S. A.</p> <p style="font-size: 2em;"><b>\$40<sup>34</sup></b> PER MONTH*</p>
<p>Savingest Days on <b>RAMBLER CLASSIC 6</b> Get Big Room for Six 6-footers</p> 	<p>Classic 2-Door Deluxe Sedan—has Double Safety Brake System and self-adjusting brakes (both standard on all Ramblers!).</p> <p style="font-size: 2em;"><b>\$43<sup>70</sup></b> PER MONTH*</p>
<p>Savingest Days on <b>250 HP RAMBLER AMBASSADOR V-8</b> Get Top Performance+Top Luxury</p> 	<p>Ambassador 2-Door Custom Sedan—luxeous, roomy, power-packed with 250 HP V-8 engine (270 HP optional at extra cost).</p> <p style="font-size: 2em;"><b>\$52<sup>66</sup></b> PER MONTH*</p>

\*Monthly payments based on manufacturers' suggested retail price, with 1% down payment, 36-month contract with normal carrying charges, federal taxes paid. Does not include optional equipment, whitewall tires, transportation, insurance, state and local taxes, if any.

Rambler Dealers Have Sold Over 800,000 Cars Since October —Because We're Giving Better Deals on New and Used Cars

Yes, over 330,000 new Ramblers and nearly half a million used cars in the past 9 months. But you haven't seen anything yet! We're aiming at the best July in all Rambler history.

To do it, we're offering even more fabulous deals—even bigger opportunities to save—all July long.

Join the Wise Car Buyers • Join the Trade Parade to

# RAMBLER

## SCHIFTER RAMBLER, INC.

89 Washington Ave., Nutley, N. J.

\$\$\$\$\$\$



**GRAND UNION**  
SUPERMARKETS

# Gala Opening

Check these **LOWEST PRICES** in town

**GRAND UNION**

Franklin Ave. & Harrison Street, Nutley

OPEN 'TILL 9 P. M. THURSDAY  
FRIDAY 'TILL 10 P. M. — SATURDAY 'TILL 6 P. M.

**STORE HOURS  
OPENING WEEK**

**Thursday 'til 9 p.m.**  
**Friday 'til 10 p.m.**  
(Saturday 'til 6 p.m.)

**DEEP BLUE-SOLID  
Light Tuna**

**3** 7 oz. cans **79<sup>c</sup>**

**FROZEN BLENDED  
Dole Juices**

OR FROZEN PINEAPPLE **2** 6 oz. cans **37<sup>c</sup>**

**Homestead CANNED FOODS Sale!**

**6** 16 oz. cans **85<sup>c</sup>**

Choose from these favorites...  
★ TOMATOES ★ CREAM CORN  
★ CUT GREEN BEANS

Hundreds of FREE Samples!

**FREE!**

ONE QUART BTL.  
**ROSE-X BLEACH**  
when you buy  
ONE QUART BTL.  
**ROSE-X BLEACH  
OR STARCH**

4 OZ. CUP BREAKSTONE  
**TEMP-TEE**  
**Cream Cheese**  
when you buy  
ONE 1-LB. CUP  
**BREAKSTONE  
COTTAGE CHEESE**

**BUTTER** FRESH-MADE GRADE 'A' 1 lb. pkg. **59<sup>c</sup>**

**LEMONADE** TIP TOP FROZEN 6 oz. can **9<sup>c</sup>**

**JELL-O** GELATIN DESSERTS 4 3 oz. pkgs. **35<sup>c</sup>**

**DOLE JUICE** PINEAPPLE 2 46 oz. cans **49<sup>c</sup>**

**COFFEE** HOLLAND HOUSE 1 lb. can **49<sup>c</sup>**

**RONZONI SPAGHETTI** 5 1 lb. pkgs. **\$1.00**  
SPAGHETTINI OR ELBOWS

**TOMATO PASTE** 8 7 oz. cans **\$1.00**  
PROGRESSO IMPORTED

**LOCATELLI** IMPORTED ROMANO Grand Union—Genuine lb. **\$1.29**

**WESTON** GEORGE INN 14 oz. pkg. **29<sup>c</sup>**  
COOKIE ASSORTMENT

**SWANEE TOILET TISSUE** 4 roll pkg. **35<sup>c</sup>**

**WATERMELONS**

**39<sup>c</sup>** each

LARGE WHOLE MELON SWEET RED RIPE

CRISP—FRESH—LARGE HEAD  
**ICEBERG LETTUCE** only **10<sup>c</sup>**

FRESH—GOLDEN  
**SWEET CORN** 10 for **39<sup>c</sup>**

LARGE—SWEET  
**BING CHERRIES** lb. **39<sup>c</sup>**

CALIFORNIA BUTTER SMOOTH  
**AVOCADOS** 2 for **25<sup>c</sup>**

Prices effective in the new Nutley Grand Union Wed., July 18th thru Sat., July 21st. We reserve the right to limit quantities.

THURSDAY, JULY 19, 1962



## Belleville Girl Is Participating In 'Experiment'

Miss Barbara D. Underwood, daughter of Dr. and Mrs. Robert Underwood of 345 Washington Avenue, Belleville, is now in France participating in the 1962 summer program of The Experiment in International Living.

This group is an independent, non-profit organization in the field of international education which helps to promote international understanding by a personal-to-person approach. Since its founding in 1959 by Donald R. Wall, The Experiment has sent more than 14,000 Americans abroad to learn how peoples of other countries think, act and live. This year some 1800 are traveling to 31 countries on five continents. Each of the Experimenters will live for a month as a member of a foreign family and will spend another month traveling about the country visited.

Experimenters travel in groups of ten, under the guidance of mature leaders specially selected and trained by The Experiment. Before they are admitted to the program, every effort is made to assure that Experimenters are worthy representatives of the United States.

Members receive special instruction on the language, customs, history and culture of the country they will visit. After the homestay, they travel as a group, often in the company of young members of their host families. Toward the close of the program, Experimenters enjoy a visit to a major city and an opportunity (for those who qualify) for a few days of independent travel.

The Experiment administers three basic Outbound programs (U.S. to other countries): Regular groups; The Experiment Ambassador Program (through which communities and colleges raise funds and select outstanding young people to go abroad as their representatives); and various Cooperative Overseas Programs with academic institutions. During 1962 the Experiment program will extend into all the major nations of Western Europe, and to countries in Africa, Asia, Latin America, and the Middle East.

### TOO LATE FOR CLASSIFIED

**WANTED TO BUY**  
**WE HAVE THE**  
**POOL... BUT...**  
**NO FILTER**

Pool Size 13 Ft. x 3 Ft.  
If You Have One To Sell  
CALL NO. 1-1785

The Experiment also administers three Incoming programs (other countries to the U.S.): Regular groups, Ambassadors, and Individual Homestay Placements for students coming here to study. During 1962 nearly 1300 young people from some 65 countries will visit the United States on these programs. In addition to family living and travel, many of the Incoming Experiment groups will also spend two weeks at a college or camp.

## Grand Union

(Continued From Page 1)

products, frozen foods and staple groceries.

Bargain prices, thousands of free gifts for adults and children and 100 free Triple-S Blue Stamps with each order of \$5 or more were part of the store's grand opening program.

The new Grand Union will bring to 78 the number of stores operated by the Eastern food chain's Suburban Division in New Jersey and Rockland and Orange Counties in New York.

The nation's ninth largest food chain, Grand Union operates a total of 415 retail outlets in ten Eastern states and Puerto Rico.

## Map Page

(Continued From Page 1)

The prize will be awarded to the one who first submits the correct answer.

A decision by The Times as to the winner is final and may not be disputed.

Only one person in a family may submit an answer.

The contest deadline is 5 p.m. on the Monday following the publication of the contest picture.

If no identification is made by that time the prize money will be added to the following week's award.

## Council Ponders

(Continued From Page 1)

He called Cummis a very cooperative consultant, but added: "When one deals on the local level as we Councilmen have to do, we have to deal with every facet of local society."

Councilman Greco reported that the first meeting with Cummis on the code had been a very amicable one with considerable accomplished.

"But we have to be meticulous about its context," he said. "It's not something to be rushed into. I'm willing to spend all my nights and weekends toward getting it into shape."

Councilman Strumolo said the code seemed satisfactory to him, as far as he had been able to review it.

"It will need a few minor changes," he commented, "but these can be made as we go along. The main thing now is to get a working code on the books."

Councilman Addonizio said he preferred to make no comment on the code until it had been completely reviewed.

A&P HAS PLENTY OF EASY-TO-FIX FOODS FOR TAKE-IT-EASY MEALS—PLUS—

Easy-on-your-Purse

EVERYDAY LOW PRICES

PLENTY OF PLAID STAMPS

Come see... You'll save!

## "SUPER-RIGHT" NATURALLY-AGED BEEF SALE!

Here's your opportunity to save more money on beef — "Super Right" Quality grain-fed steer beef that's famed for flavor and tenderness! Come in and select your favorite cuts — and save!

Short Cut—(First Cuts Priced Higher)

## RIBS OF BEEF

Over-Ready 69¢ lb. Regular Style 59¢ lb.

TOP or BOTTOM

## ROUND ROAST

Boneless No Fat Added 85¢ lb.

FRESH or CORNED—Boneless

## BRISKET BEEF

Straight Cuts 85¢ Front 65¢ lb.

Boneless Chuck

## Pot Roast

Chuck—Bone In

## Roast California

## Rump Roast

## Newport Roast

## Cross Rib Roast

## Sirloin Tip Roast

## Ground Chuck Beef

## Top Sirloin Roast

## Chuck Fillet

## Rib Steak

## Beef Short Ribs

## Shoulder Steaks

## Ground Beef

## Top Sirloin Steak

## Eye Round Roast

## Flank Steak

## Minute Steak

## Stewing Beef

### 4 Jane Parker Bonus Stamp Features!



**APPLE PIE**  
50¢  
50 Extra Plaid Stamps with purchase of 1 lb. 3oz. cut 59¢

**ORANGE CHIFFON CAKE**  
50¢  
25 Extra Plaid Stamps with purchase of 25¢

### Cash Savings on Fine Groceries

Applesauce Raisin, Butter Pecan, Date & Nut, 1 1/2 oz.—Cherry Almond, Fudge & Nut, Orange, 11 1/2 oz. pkg.

## DUNCAN HINES

EARLY AMERICAN CAKE MIXES 35¢

## RONZONI

SPAGHETTI No. 8 or 2 1 lb. 41¢  
SPAGHETTINI No. 9 2 pgs.

## HAWAIIAN

PUNCH 2 1 qt. 14 fluid oz. cans 65¢

## JELL-O DESSERT

All Flavors Gelatin 4 3 oz. pgs. 37¢

## Potatoes

A&P Brand Whole White 5 1 lb. cans 49¢

## Ritz Crackers

Nabisco 12 oz. 31¢

## Burys Butter Cookies

9 oz. 29¢

## Coconut Macaroons

Sunshine 12 oz. 49¢

## Kretschmer's

Wheat 12 oz. 37¢

## Tomatoes

Del Monte 1 lb. 47¢

## Italian Dressing

Ann Page 8 oz. 25¢

## Wine Vinegar

Eldeen Brand bottle 23¢

## Scalloped Potatoes

Betty Crocker 8.35 oz. 37¢

## Potatoes Au Gratin

Betty Crocker 8.35 oz. 41¢

## Nescafe Instant Coffee

6 oz. jar 89¢

## Chase & Sanborn

Instant Coffee 6 oz. jar 99¢

## Contadina Tomato Paste

2 27¢

## Marcal Pastel Napkins

2 19¢

### Refreshing Summer Beverages!

## Yukon Club

All Flavors 2 4-oz. fluid 29¢

## Canada Dry

Gingerale Club 2 1 qt. 12 fluid 49¢

## Hoffman's

Soda—Plus 2 1 pt. 13 fluid 49¢

## White Rock

All Flavors 3 12 fluid 38¢

## Welch's Fruit Drink

Apple-Grape quart 33¢

## Dole Pineapple Juice

1 qt. 14 fluid 31¢

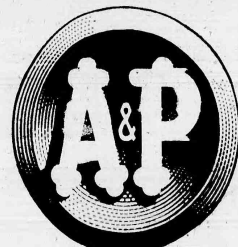
## Coca-Cola

Refreshing Beverage 2 12 fluid 25¢

## No-Cal Beverages

No deposit 2 1 pint 29¢

Prices effective through Saturday, July 21st in Super Markets and Self-Service stores only. All Tobacco, Produce, Fluid-Milk and Alcohol Beverages exempt from Plaid Stamp offer.



Save extra cash on A&P's famous low, low prices — Get PLAID STAMPS, too — The #1 Stamp In The New York Area By Far!



## Fresh Fruits and Vegetables!

Freestone Sweet Juicy 3 lbs. 29¢

From Nearby Farms—Sweet Golden Corn 6 ears 25¢

Red Ripe Sweet whole Juicy melon 59¢

Sweet Juicy Bing Cherries lb. 35¢

From Florida Seedless Limes bag of 6 23¢

From Nearby Farms — Green or Yellow Fresh Squash lb. 8¢

From Local Farms Pascal Celery large stalk 19¢

### Frozen Food Buys!

Libby's—Regular or Pink Lemonade 10 6 oz. cans 97¢

Orange Juice ASP Brand Concentrated 3 12 oz. cans 85¢

Downyflake Waffles Pop in Toaster 2 5 oz. pgs. 27¢

Mixed Vegetables Birds Eye 2 10 oz. pgs. 45¢

Baby Lima Beans Birds Eye Brand 2 10 oz. pgs. 27¢

Stuffed Peppers Holloway House 14 oz. pkg. 59¢

Morton's Dinners Beef, Chicken, Turkey, Ham 11 oz. pkg. 49¢

Birds Eye Rhubarb 1 lb. pkg. 29¢

Birds Eye Mixed Fruit 12 oz. pkg. 39¢

## MARVEL ICE CREAM

All Flavors 1/2 gallon cont. 59¢

### Dairy Center Buys!

Mild American—Colored or White Mel-o-Bit Cheese 59¢

Mild Ched-o-Bit Pasteurized Process Cheese Food 2 lb. loaf 75¢

Store Cheese Sharp Cheddar Old Fashioned—N.Y. State 1 lb. 69¢

Swiss Slices ASP Brand Imported Switzerland 6 oz. 53¢

Muenster Sliced Cheese ASP Brand Domestic 8 oz. 59¢

Grated Cheese Parmesan—Romano 8 oz. shaker 27¢

Victory Cream Cheese Pasteurized 8 oz. 27¢

Cream Cheese Brexington—Whipped 8 oz. 49¢

Cottage Cheese Brexington—Regular 16 oz. 33¢

50 Extra Stamps with purchase of 50¢ PLUM PRESERVES Ann 2 lb. jar 49¢

25 Extra Stamps with purchase of 25¢ TUMBLERS low tea Golden Floral 4 59¢

25 Extra Stamps with purchase of 25¢ COD FILLET Cap'n John's 1 lb. Frozen 45¢

NO MONEY DOWN

WE SOLVE ALL CREDIT PROBLEMS

Enjoy your used car with a Guaranteed Aladdin Olds Policy - Guaranteed for the life of the car you buy. 30 DAY FREE TRIAL

Authorized Oldsmobile Direct Factory Dealer

'61 OLDS. \$3495 '58 OLDS. \$8.00 per wk.  
Conv. Starfire, white, full power  
As Low As \$7.50 per wk.

'61 CHEV. \$12.50 per wk.  
Cervair Monza Spl. Cpe., silk EE  
As Low As \$10.00 per wk.

'61 OLDS. \$17.00 per wk.  
4-Dr. Hardtop, F.E.  
As Low As \$15.00 per wk.

'61 OLDS. \$14.00 per wk.  
4-Dr. Hardtop, F.E.  
As Low As \$12.00 per wk.

'61 CHEV. \$10.00 per wk.  
4-Dr. Hardtop, F.E.  
As Low As \$8.00 per wk.

'61 OLDS. \$15.50 per wk.  
4-Dr. Hardtop, F.E.  
As Low As \$13.50 per wk.

'61 OLDS. \$16.00 per wk.  
4-Dr. Hardtop, F.E.  
As Low As \$14.00 per wk.

'61 OLDS. \$16.50 per wk.  
4-Dr. Hardtop, F.E.  
As Low As \$14.50 per wk.

'61 OLDS. \$17.00 per wk.  
4-Dr. Hardtop, F.E.  
As Low As \$15.00 per wk.

'61 OLDS. \$17.50 per wk.  
4-Dr. Hardtop, F.E.  
As Low As \$15.50 per wk.

'61 OLDS. \$18.00 per wk.  
4-Dr. Hardtop, F.E.  
As Low As \$16.00 per wk.

'61 OLDS. \$18.50 per wk.  
4-Dr. Hardtop, F.E.  
As Low As \$16.50 per wk.

'61 OLDS. \$19.00 per wk.  
4-Dr. Hardtop, F.E.  
As Low As \$17.00 per wk.

'61 OLDS. \$19.50 per wk.  
4-Dr. Hardtop, F.E.  
As Low As \$17.50 per wk.

'61 OLDS. \$20.00 per wk.  
4-Dr. Hardtop, F.E.  
As Low As \$18.00 per wk.

'61 OLDS. \$20.50 per wk.  
4-Dr. Hardtop, F.E.  
As Low As \$18.50 per wk.

'61 OLDS. \$21.00 per wk.  
4-Dr. Hardtop, F.E.  
As Low As \$19.00 per wk.

'61 OLDS. \$21.50 per wk.  
4-Dr. Hardtop, F.E.  
As Low As \$19.50 per wk.

'61 OLDS. \$22.00 per wk.  
4-Dr. Hardtop, F.E.  
As Low As \$20.00 per wk.

'61 OLDS. \$22.50 per wk.  
4-Dr. Hardtop, F.E.  
As Low As \$20.50 per wk.

'61 OLDS. \$23.00 per wk.  
4-Dr. Hardtop, F.E.  
As Low As \$21.00 per wk.

'61 OLDS. \$23.50 per wk.  
4-Dr. Hardtop, F.E.  
As Low As \$21.50 per wk.

'61 OLDS. \$24.00 per wk.  
4-Dr. Hardtop, F.E.  
As Low As \$22.00 per wk.

'61 OLDS. \$24.50 per wk.  
4-Dr. Hardtop, F.E.  
As Low As \$22.50 per wk.

'61 OLDS. \$25.00 per wk.  
4-Dr. Hardtop, F.E.  
As Low As \$23.00 per wk.

'61 OLDS. \$25.50 per wk.  
4-Dr. Hardtop, F.E.  
As Low As \$23.50 per wk.

'61 OLDS. \$26.00 per wk.  
4-Dr. Hardtop, F.E.  
As Low As \$24.00 per wk.

'61 OLDS. \$26.50 per wk.  
4-Dr. Hardtop, F.E.  
As Low As \$24.50 per wk.

'61 OLDS. \$27.00 per wk.  
4-Dr. Hardtop, F.E.  
As Low As \$25.00 per wk.

'61 OLDS. \$27.50 per wk.  
4-Dr. Hardtop, F.E.  
As Low As \$25.50 per wk.

'61 OLDS. \$28.00 per wk.  
4-Dr. Hardtop, F.E.  
As Low As \$26.00 per wk.

'61 OLDS. \$28.50 per wk.  
4-Dr. Hardtop, F.E.  
As Low As \$26.50 per wk.

'61 OLDS. \$29.00 per wk.  
4-Dr. Hardtop, F.E.  
As Low As \$27.00 per wk.

'61 OLDS. \$29.50 per wk.  
4-Dr. Hardtop, F.E.  
As Low As \$27.50 per wk.

'61 OLDS. \$30.00 per wk.  
4-Dr. Hardtop, F.E.  
As Low As \$28.00 per wk.

'61 OLDS. \$30.50 per wk.  
4-Dr. Hardtop, F.E.  
As Low As \$28.50 per wk.

'61 OLDS. \$31.00 per wk.  
4-Dr. Hardtop, F.E.  
As Low As \$29.00 per wk.

'61 OLDS. \$31.50 per wk.  
4-Dr. Hardtop, F.E.  
As Low As \$29.50 per wk.

'61 OLDS. \$32.00 per wk.  
4-Dr. Hardtop, F.E.  
As Low As \$30.00 per wk.

'61 OLDS. \$32.50 per wk.  
4-Dr. Hardtop, F.E.  
As Low As \$30.50 per wk.

'61 OLDS. \$33.00 per wk.  
4-Dr. Hardtop, F.E.  
As Low As \$31.00 per wk.

'61 OLDS. \$33.50 per wk.  
4-Dr. Hardtop, F.E.  
As Low As \$31.50 per wk.

'61 OLDS. \$34.00 per wk.  
4-Dr. Hardtop, F.E.  
As Low As \$32.00 per wk.

'61 OLDS. \$34.50 per wk.  
4-Dr. Hardtop, F.E.  
As Low As \$32.50 per wk.

'61 OLDS. \$35.00 per wk.  
4-Dr. Hardtop, F.E.  
As Low As \$33.00 per wk.

'61 OLDS. \$35.50 per wk.  
4-Dr. Hardtop, F.E.  
As Low As \$33.50 per wk.

'61 OLDS. \$36.00 per wk.  
4-Dr. Hardtop, F.E.  
As Low As \$34.00 per wk.

'61 OLDS. \$36.50 per wk.  
4-Dr. Hardtop, F.E.  
As Low As \$34.50 per wk.

'61 OLDS. \$37.00 per wk.  
4-Dr. Hardtop, F.E.  
As Low As \$35.00 per wk.

'61 OLDS. \$37.50 per wk.  
4-Dr. Hardtop, F.E.  
As Low As \$35.50 per wk.

'61 OLDS. \$38.00 per wk.  
4-Dr. Hardtop, F.E.  
As Low As \$36.00 per wk.

'61 OLDS. \$38.50 per wk.  
4-Dr. Hardtop, F.E.  
As Low As \$36.50 per wk.

'61 OLDS. \$39.00 per wk.  
4-Dr. Hardtop, F.E.  
As Low As \$37.00 per wk.

'61 OLDS. \$39.50 per wk.  
4-Dr. Hardtop, F.E.  
As Low As \$37.50 per wk.

'61 OLDS. \$40.00 per wk.  
4-Dr. Hardtop, F.E.  
As Low As \$38.00 per wk.

'61 OLDS. \$40.50 per wk.  
4-Dr. Hardtop, F.E.  
As Low As \$38.50 per wk.

'61 OLDS. \$41.00 per wk.  
4-Dr. Hardtop, F.E.  
As Low As \$39.00 per wk.

'61 OLDS. \$41.50 per wk.  
4-Dr. Hardtop, F.E.  
As Low As \$39.50 per wk.

'61 OLDS. \$42.00 per wk.  
4-Dr. Hardtop, F.E.  
As Low As \$40.00 per wk.

'61 OLDS. \$42.50 per wk.  
4-Dr. Hardtop, F.E.  
As Low As \$40.50 per wk.

'61 OLDS. \$43.00 per wk.  
4-Dr. Hardtop, F.E.  
As Low As \$41.00 per wk.

'61 OLDS. \$43.50 per wk.  
4-Dr. Hardtop, F.E.  
As Low As \$41.50 per wk.

'61 OLDS. \$44.00 per wk.  
4-Dr. Hardtop, F.E.  
As Low As \$42.00 per wk.

'61 OLDS. \$44.50 per wk.  
4-Dr. Hardtop, F.E.  
As Low As \$42.50 per wk.

'61 OLDS. \$45.00 per wk.  
4-Dr. Hardtop, F.E.  
As Low As \$43.00 per wk.

'61 OLDS. \$45.50 per wk.  
4-Dr. Hardtop, F.E.  
As Low As \$43.50 per wk.

'61 OLDS. \$46.00 per wk.  
4-Dr. Hardtop, F.E.  
As Low As \$44.00 per wk.

'61 OLDS. \$46.50 per wk.  
4-Dr. Hardtop, F.E.  
As Low As \$44.50 per wk.

'61 OLDS. \$47.00 per wk.  
4-Dr. Hardtop, F.E.  
As Low As \$45.00 per wk.

'61 OLDS. \$47.50 per wk.  
4-Dr. Hardtop, F.E.  
As Low As \$45.50 per wk.

'61 OLDS. \$48.00 per wk.  
4-Dr. Hardtop, F.E.  
As Low As \$46.00 per wk.

'61 OLDS. \$48.50 per wk.  
4-Dr. Hardtop, F.E.  
As Low As \$46.50 per wk.

'61 OLDS. \$49.00 per wk.  
4-Dr. Hardtop, F.E.  
As Low As \$47.00 per wk.

'61 OLDS. \$49.50 per wk.  
4-Dr. Hardtop, F.E.  
As Low As \$47.50 per wk.

'61 OLDS. \$50.00 per wk.  
4-Dr. Hardtop, F.E.  
As Low As \$48.00 per wk.

'61 OLDS. \$50.50 per wk.  
4-Dr. Hardtop, F.E.  
As Low As \$48.50 per wk.

'61 OLDS. \$51.00 per wk.  
4-Dr. Hardtop, F.E.  
As Low As \$49.00 per wk.

'61 OLDS. \$51.50 per wk.  
4-Dr. Hardtop, F.E.  
As Low As \$49.50 per wk.

'61 OLDS. \$52.00 per wk.  
4-Dr. Hardtop, F.E.  
As Low As \$50.00 per wk.

'61 OLDS. \$52.50 per wk.  
4-Dr. Hardtop, F.E.  
As Low As \$50.50 per wk.

'61 OLDS. \$53.00 per wk.  
4-Dr. Hardtop, F.E.  
As Low As \$51.00 per wk.

'61 OLDS. \$53.50 per wk.  
4-Dr. Hardtop, F.E.  
As Low As \$51.50 per wk.

'61 OLDS. \$54.00 per wk.  
4-Dr. Hardtop, F.E.  
As Low As \$52.00 per wk.

'61 OLDS. \$54.50 per wk.  
4-Dr. Hardtop, F.E.  
As Low As \$52.50 per wk.

'61 OLDS. \$55.00 per wk.  
4-Dr. Hardtop, F.E.  
As Low As \$53.00 per wk.

'61 OLDS. \$55.50 per wk.  
4-Dr. Hardtop, F.E.  
As Low As \$53.50 per wk.

'61 OLDS. \$56.00 per wk.  
4-Dr. Hardtop, F.E.  
As Low As \$54.00 per wk.

'61 OLDS. \$56.50 per wk.  
4-Dr. Hardtop, F.E.  
As Low As \$54.50 per wk.

'61 OLDS. \$57.00 per wk.  
4-Dr. Hardtop, F.E.  
As Low As \$55.00 per wk.

'61 OLDS. \$57.50 per wk.  
4-Dr. Hardtop, F.E.  
As Low As \$55.50 per wk.

'61 OLDS. \$58.00 per wk.  
4-Dr. Hardtop, F.E.  
As Low As \$56.00 per wk.

'61 OLDS. \$58.50 per wk.  
4-Dr. Hardtop, F.E.  
As Low As \$56.50 per wk.

'61 OLDS. \$59.00 per wk.  
4-Dr. Hardtop, F.E.  
As Low As \$57.00 per wk.

'61 OLDS. \$59.50 per wk.  
4-Dr. Hardtop, F.E.  
As Low As \$57.50 per wk.

'61 OLDS. \$60



Beautiful Bucolic Belleville  
Open Trolleys Were Once  
Popular Summer Transport

By FREDERICK J. PIXLEE

In this issue the author will review public transportation as he remembers it in Belleville. No attempt will be made to review the horse car transportation nor the routes it pursued without further authentic research.

I will quote from the late Hugh Holmes book, "An Interesting Review of Belleville," a statement which I find amusing even today. He hopefully narrates, "We are looking with great expectation for the nicely cushioned and comfortable electric cars, in which we can reach Market Street in 15 minutes."

As far as the author knows, after 38 years of using public conveyances to Newark, Mr. Holmes' fond dreams of comfort and speed never did materialize. If anyone can get to downtown Newark on public conveyance in 15 minutes from Jordenboro Street and Washington Avenue, please let me know. He deserves to have his picture in the paper.

UNCOMFORTABLE

The trolleys used on the Broad Line were never noted for their comfort. The seating accommodations consisted of one long seat on each side of the car and the passengers sat facing each other. When the car started they were thrown sideways toward the rear and when it stopped they were again thrown sideways toward the front. Looking out the window was a good way to get a stiff neck.

Of course, all of us in those days were rather odd, we were conscious. It was unthinkable that a young person or a child was seated and an older person had to stand. I cannot understand why big, strong boys going to high school today must take up one or two seats. They slouch there while old ladies going to a hard day's work have to stand. Of course this remark will make no impression on the younger generation, since the type that does this sort of thing is unlikely to be reading this article. I will ask one question of them: "If your Mother was aboard a bus with you would you take the seat and let her stand?" Replies from the younger generation will be appreciated.

OPEN TROLLEYS

All of us in those bygone days would welcome the spring and summer, for it meant that the big open cars would be placed in service. These were the only cars on the Broad Line which were comfortable, at least for the passengers. It was rather rough on the conductor, for he had to ride the running board.

The seats extended the full width of the car and each could accommodate about six persons. There were about 30 of these seats, giving a capacity greater than the city of the closed cars. Many of us think back with nostalgic memories about the rides

A Call For Old-Time Pictures

The articles that have been appearing on this page of The Times-News for several weeks have been attracting considerable attention, both among old-timers in the community whose memories have been stirred and among newcomers who are interested in learning about Belleville as it was in days gone by.

Frederick J. Pixlee, the author of the series, has been doing an excellent job of writing and was able to furnish at least one excellent illustration to go with one of the stories. However, he does not have many of these old pictures, and he is wondering if some other Belleville old-timers might be able to help him out. Get in touch with us at The Times-News or with Mr. Pixlee personally and let us know what you have that you would be willing to lend us.

We took on a hot summer's night in these cars to cool off. Riding these cars was one of the few pleasures we had in the transportation field.

The only time that an open car was uncomfortable was on a rainy day. Then it was very uncomfortable and for those who had to sit in the outer seats it was no better than being in the open air.

Shortly before World War I, Public Service bought a lot of new cars and thought that the antiquated vehicles that they ran on the Broad Line would be replaced. Were they? No, of course not. We had to accommodate the more affluent residents of Forest Hill and Montclair. Not the people of Belleville. We still had to put up with the old cars.

UNIQUE FEATURE

In the early 1920's Public Service instituted a rather unique feature during the rush hours. This was known as the "trailer." It consisted of a large powerless car pulled by a conventional trolley. They were very commodious in regard to space and seating arrangements, but they had hard wooden benches and almost no springs. Even this was a little better than the "patrol wagon" arrangement of seating in the conveying cars.

During the homebound - bound rush hour you were lucky if you got as far as the Lackawanna Station in Newark from Broad and Market in 40 minutes. We fully anticipated an hour's ride home and a night and allowed for it accordingly.

For the night runs the Company brought out what was known as the "flat wheelers." These could be heard a long way off because this wheel made a most annoying bang with every revolution. It must have been very frustrating to try to get any sleep if one lived on Washington Avenue in those days.

This discourse on public transportation must be continued in a later issue, due to the wide field it must cover. I would like to hear from anyone who remembers the date that the Big Tree car barn was put in service.

A CONTINUATION

And now I will continue with the article which was left un-

concluded last week because of lack of space. As you may recall, I was telling about life as it was in Belleville in the first decade of the century. Specifically, I was mentioning the taking of music lessons.

Many parents had to endure Kohler's Scales and Exercises for the Pianoforte nightly and still others were tormented regularly by the raucous notes of poorly tuned violins.

Still others, in order to entertain, entered the field of education, particularly those who were not musically inclined. So, dear jerks like "The Highwayman" the "Summer Storm" and "The Death Dance" were very properly elucidated by young ladies with soulful expressions. I don't think the public had to suffer as much in those days as in these days of the so called popular singer.

AGONY BECAME ACUTE

Of course the agony did get pretty acute sometimes, but then the child could always be furthered that the practice hour was over, and the noise stopped immediately.

While there were a great many so-called entertainers who never got much above the mediocre

stage, there were a few who were superior. They were a pleasure to listen to.

Among the star piano players, in addition to the one mentioned above, were Miss Ella Dickenson (Married named unknown to the author), Mrs. Muriel Bunnell Dunn, and the late Miss Agnes Lindott and Mrs. Viola Siebold Brookman.

Mrs. Anna Holmes Bunnell, singer, music teacher and composer, heads the list of vocalists. Others were Miss Lottie Thorpe, Mrs. Elsie Forbes Prophet, Miss Kathryn Scaine, (again married name unknown) and Miss Agnes Wharton, whose deep contralto voice was a pleasure to listen to.

STAR ELUCONISTS

The elucation field had its star pupils. Worth of mention were Mrs. Edith Current Hirdes, Miss Ruth Hyde, Miss Lydia Alcroft, Miss Lillian Harris and Miss Ruth Leach. The author wishes to apologize to all those whose name has been changed through marriage and would like to hear from each mentioned if possible.

As time goes on the day is rapidly approaching when the author will have exhausted the lore of Belleville that exists within the limits of his own memory.

I wish to publicly thank all of the people who have written to the paper and called me on the telephone. I think that I have just about scratched the surface in regard to the way Belleville in the period of 1900 to 1900.

Mr. Allan Crisp is doing an excellent job and trying to form a Belleville Historical Society and he has courteously invited me to join him in doing what we can to unearth the history

of our town. The rich lore of this community that goes back even further than the British Colonies has been sadly neglected. Belleville is one of the oldest communities in the State of New Jersey, yet so little is known about it. We need to know more.

Kenneth Sutphen Is Selected  
Secretary Of State Assn.

Kenneth C. Sutphen, director of the Nutley Medical Laboratory, 351 Franklin Avenue, was voted secretary of the New Jersey Association of Clinical Laboratory Directors at a meeting held at the Roger Smith Hotel, New Brunswick, on June 20. He will serve a two - year term.

Sutphen was graduated from Yale University with a B. S. degree in 1948. He did post graduate work at Seion Hat and Rutgers University and Stevens Institute of Technology, and served for six years in the U. S. Army during World War II and in the Korea conflict.

He opened the local laboratory in 1957. A member of the Nutley Lions Club, he is a member also of the National Society of Laboratory Directors, the American Association of Bioanalysts and its scientific council.

The clinical laboratory directors group in which he holds office was formed in the late 40's to promote the betterment of New Jersey laboratories and their professional standing. It was instrumental in the formation of laws to license medical laboratories.

Medical Degree  
Conferred On  
Jacob Haft



DR. JACOB I. HAFT

Jacob I. Haft, son of Mr. and Mrs. Louis Haft of 55 Bremond Street, has been awarded the degree of Doctor of Medicine by the College of Physicians and Surgeons of Columbia University. He is an alumnus of Belleville High School and was graduated Cum Laude from Harvard College. He was editor of the Spot Light for two years.

A member of Alpha Omega Alpha, national medical honor society, he recently spent two months studying tropical medicine in Gaita, Liberia, under a grant from the National Public Health Service. He will serve his internship in medicine at Strong Memorial Hospital, Rochester, N. Y.

Commandments  
Are Listed For  
Skeeter Control

Emil L. Amabile, president of the County Mosquito Exterminating Commission, calls attention to the "Ten Commandments of Mosquito Control."

Many mosquitos breed locally, and most of them in fresh water," he says. "If each of the citizens would comply with the 'Ten Commandments,' the few complaints received by the Mosquito Commission each year would be reduced to practically nil."

Following are those ten commandments:

1. Eliminate all standing fresh water.
2. Flatten all tin cans or puncture both ends.
3. Completely seal cesspools and screen all vents.
4. Clean regularly clogged roof gutters and drain flat roofs, so no water stays.
5. Cover all standing receptacles such as rain barrels in rural areas with netting.
6. Empty and refill outdoor bird baths daily.
7. Stock garden pools with goldfish.
8. This wheelbarrows and other machines with containers to prevent holding water.
9. Empty watering can after using around the garden.
10. Dispose of old tires, or anything which holds water.

ENJOY THESE  
ADVANTAGES  
by  
SAVING  
at  
FIDELITY UNION

LOANS

Fidelity depositors can have money without dipping into their savings. Loans at low bank-rates and convenient terms made promptly to consolidate debts, meet emergencies, take advantage of opportunities, and for other sound reasons.

CHECKING ACCOUNTS

You can have both a checking account and a savings account at Fidelity. This entitles you to use "Easy-Save," Fidelity's exclusive savings plan. Automatic monthly transfers can be made from your checking account to your savings account—at no cost to you.

MONEY ORDERS

Fidelity depositors may purchase money orders in any amount up to \$500.00 for only 15¢ each. You pay up to \$1.60 more when you buy U.S. Postal Money Orders.

SERVICE

Fidelity savers may present their bank book to deposit or withdraw at any of Fidelity's offices in Newark, Belleville, East Orange and Irvington.

SAVE YOUR MONEY WHERE  
ALL YOUR BANKING CAN  
BE DONE IN ONE STOP

FIDELITY  
UNION  
TRUST COMPANY

The Bank That's Strong for You!

FIDELITY SAVERS  
EARN  
COMPOUND INTEREST  
4 TIMES A YEAR

Member Federal Deposit Insurance Corporation

State CD Director Warns  
He'll Give Some The Air

Some local and county civil defense officials are ignoring their responsibilities and may be dismissed as a result, Acting State Civil Defense Director Thomas S. Dignan warned today.

Dignan did not say how many directors may be involved nor did he mention names. But he indicated at least one county coordinator may lose his post.

Dignan said it was evident that some directors are evading their responsibilities. "The point has been reached where the don't-ings must get with it or get out," he said.

State law empowers the state director to dismiss any county or municipal director for cause. Dignan emphasized that he was not hesitating there is widespread neglect in the civil defense framework of the state. He termed the majority of the directors "dedicated, hard working individuals who have been able to keep pace with the rapid growth of civil defense in recent years."

"But there are some who have not grown with it and other new appointees who have taken their jobs too lightly," he added.

"I am especially concerned for the welfare of residents in areas where negligence by civil defense officials could result in

those areas being ill equipped to cope with a natural or nuclear disaster."

The civil defense chief warned that unless a rapid improvement is indicated in these localities, he will begin singling out individual officials for public censure.

"The success of the overall civil defense program rests largely with local directors," Dignan said. "If they aren't doing their jobs, the organization can't be expected to function well in an emergency."

Dignan said the cooperation of county and municipal directors is vital to the success of the federally sponsored community fallout shelter survey.

The survey, now in its second phase, has as its immediate goal the provision of shelter space for at least 50 per cent of the state's 4,000,000 residents. More than 11,000 buildings throughout the state already have been designated as potentially acceptable shelters and it is hoped these shelters will be ready for use by the end of the year.

Civil defense directors will be called on to encourage needed alterations to buildings, which can be made suitable as shelters, Dignan said.

BOYS 8-13 BOYS  
CAMP RO-LI  
GLENWILD LAKE, BLOOMINGDALE, N. J.

BOYS Season Opens July 30

SWIMMING

BOATING

ARCHERY

CRAFTS

CAMP FIRES

SPORTS

HIKES

COOKOUTS

MOVIES

FUN

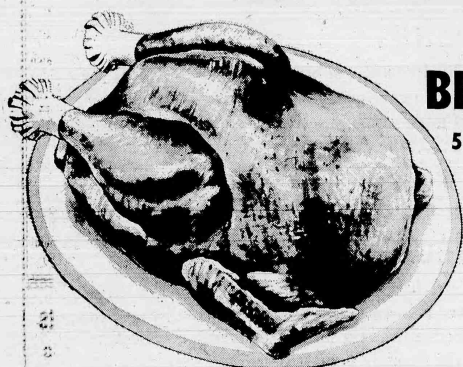
APPLY TO WILLIAM C. SMITH, SECRETARY  
140 WASHINGTON AV., BELLEVILLE - PL. 9-6252

# PLUS...TRIPLE-S BLUE STAMPS!



TOP QUALITY . . . U.S. GOV'T. . . . GRADE "A"

## TURKEYS



**BELTSVILLE**

5 to 10 lb. avg.

**37<sup>c</sup>**  
lb.

FRESH CUT CHICKEN

**BREASTS**

lb. **49<sup>c</sup>**

TOP QUALITY—CHICKEN

**LEGS**

EASTERN  
SHORE

lb. **39<sup>c</sup>**

**BONELESS BRISKET**

**CORNEB BEEF**

**GROUND CHUCK**

**FRANKFURTERS**

**ITALIAN SAUSAGE**

**SLICED BACON**

1st cut... lb. **69<sup>c</sup>**

FRESHLY  
GROUND

HAYDU  
SKINLESS

SWEET  
OR HOT

IMPORTED DANISH CROWN  
No refrigeration needed!

THICK  
CUT  
lb.

**49<sup>c</sup>**

lb.

**69<sup>c</sup>**

2 lb. pkg.

**89<sup>c</sup>**

lb.

**69<sup>c</sup>**

1 lb.  
can

**59<sup>c</sup>**

✓ Check  
These

**LOW MEAT PRICES!**

BONELESS

**BEEF FOR STEW** lb. **69<sup>c</sup>**

TASTY—SHOULDER

**LAMB CHOPS** lb. **79<sup>c</sup>**

TWO MEALS IN ONE—CHOPS & STEW

**LAMB COMBINATION** lb. **43<sup>c</sup>**

VEAL

**SHOULDER CHOPS** lb. **69<sup>c</sup>**

HAYDU—PICNIC STYLE—SMOKED

**PORK SHOULDERS** lb. **39<sup>c</sup>**

END CUT

**PORK CHOPS** lb. **39<sup>c</sup>**

CENTER CUT

**PORK CHOPS** lb. **89<sup>c</sup>**

FOR SALADS OR FRICASSEE

**FRESH FOWL** lb. **39<sup>c</sup>**

COUNTRY STYLE

**SPARERIBS** lb. **39<sup>c</sup>**

ANY SIZE PIECE—HAYDU

**BOLOGNA** or LIVERWURST lb. **49<sup>c</sup>**

**FREE**

**730** Extra Bonus  
Triple-S  
**BLUE STAMPS**  
OVER ONE HALF BOOK

**50**  
BLUE STAMPS

WITH PURCHASE OF EVERY

**SIRLOIN**

OR  
PORTERHOUSE

**STEAK**

**50**  
BLUE STAMPS

WITH PURCHASE OF EVERY

CUT UP—SPLIT  
OR QUARTERED

**FRYER**

**100**  
BLUE STAMPS

WITH PURCHASE OF TWO 5 OZ. JARS

**LYNDEN**

BONED

**CHICKEN**

**50**  
BLUE STAMPS

WITH PURCHASE OF QT. CAN

**THERMO-LITE**

CHARCOAL  
LIGHTER FLUID

**50**  
BLUE STAMPS

WITH PURCHASE OF FOUR 15 OZ. CANS

**LADDIE BOY**

DOG FOOD  
Chicken • Liver or  
Meat Balls with Gravy

**50**  
BLUE STAMPS

WITH PURCHASE OF PKG. OF 100

**LIPTON TEA BAGS**

or 1/2 LB. TEA

**50**  
BLUE STAMPS

WITH PURCHASE OF TWO PKGS. OF 18

**GRAND**

BRAND

**SOAP PADS**

**50**  
BLUE STAMPS

WITH PURCHASE OF EVERY TWO 10 OZ. PKGS.

GRAND UNION FROZEN  
HADDOCK OR FLOUNDER

**DINNERS**

**50**  
BLUE STAMPS

WITH PURCHASE OF EVERY 2 PINT JARS

**PRINCE**

SPAGHETTI  
OR MARINARA

**SAUCE**

**50**  
BLUE STAMPS

WITH PURCHASE OF EVERY TWO 8 OZ. PKGS.

**WESTON**

SWEET SIXTEEN  
CHOC. & VANILLA

**COOKIES**

**50**  
BLUE STAMPS

WITH PURCHASE OF EVERY TWO 8 OZ. PKGS.

GRAND UNION FROZEN  
SHRIMP OR SCALLOP

**DINNERS**

**50**  
BLUE STAMPS

WITH PURCHASE OF EVERY QT. JAR

**FRESH CITRUS SALAD**

**30**  
BLUE STAMPS

WITH PURCHASE OF QUART DEAL BOT.

**BONNIE FLUFF RINSE**

**30**  
BLUE STAMPS

WITH PURCHASE OF EVERY NANCY LYNN

**APPLE CRUMB PIE**

**20**  
BLUE STAMPS

WITH PURCHASE OF EVERY NANCY LYNN

**DANISH**

RASPBERRY

**HORN**

**WIN! FREE!**  
**64,000** TRIPLE-S  
BLUE STAMPS  
IN OUR BIG GRAND OPENING  
"GUESS THE DRESS" CONTEST  
NOTHING TO BUY! JUST MAKE A GUESS!

Prices effective in the new Nutley Grand Union Wed., July 18th thru Sat., July 21st. We reserve the right to limit quantities.



# Don't Be A Show Off While Swimming

## Montclair YMCA Swim Expert Cautions

"Showoffs" are a pain in the neck anywhere, but around beaches and swimming pools they are a positive menace to life and limb.

That is why G.H. Davis, aquatic expert of the Montclair YMCA, says one of the most important rules of water-front safety is never to "show off" when you are around boats, swimming pools, or beaches. It may be fun to rock the boat or duck unsuspecting bathers, but if your victims can't swim, or should they strike their heads on hidden rocks, humor very quickly turns to tragedy.

Another trouble with "showoffs" is that when they're not getting other people into trouble they're getting into it themselves. Many a "showoff" has had to be rescued because he got into a predicament from which he could not extricate himself. Sometimes those going to his rescue suffer injuries or death. The time a lifeguard takes in saving a "showoff" from his own follies might cost more deserving people their lives.

Another way people get into trouble in the water is by doing their racing away from shore. "If you're going to have a race," Davis cautions, "start it out in the water from a float or a dock and then race toward the shore. That way you will be closer to land in case something goes wrong and you have to have help. You also may be able to reach shallow water. Should you be racing toward deep water, you might find yourself in trouble exhausted, and far from help."

At the same time Davis calls attention to the fact that swimming is one of the finest of all exercises, bringing into play every important muscle. Swimming is a standard procedure in restraining withered limbs, and even cardiac patients, under doctor's directions, may go swimming when other forms of exercise are denied them.

## Rec. Bulletin Board

- THURSDAY**
- 9:00 a.m. — Playgrounds Open at Schools 1, 4, Planseon, Msgr. Kelly, Fairway, Montgomery, Recreation House and Stadium.
  - 3:30 p.m. — Jr. Barbell Club — Stadium.
  - 6:00 p.m. — Senior League — Giants vs. Phils — Stadium.
  - 6:00 p.m. — Benevolent Softball — Elks vs. Fire Dept. — Belleville Park.
  - 6:00 p.m. — Benevolent Softball — Knights of Columbus vs. Mets — Belleville Park.
  - 6:30 p.m. — Peanut League — White Sox vs. Clippers — Recreation House.
  - 7:00 p.m. — Sr. Barbell Club — Stadium.
  - 7:00 p.m. — Boys Club — Friendly House.
- FRIDAY**
- 9:00 a.m. — Playgrounds Open at School 1, School 4, Planseon, Playground, Msgr. Kelly, Fairway, Montgomery, Recreation House and Stadium.
  - 3:30 p.m. — Jr. Barbell Club — Stadium.
  - 6:00 p.m. — Senior League — Red Sox vs. Braves — Stadium.
  - 7:00 p.m. — Sr. Barbell Club — Stadium.
  - 7:00 p.m. — Boys Club — Friendly House.
- MONDAY**
- 9:00 a.m. — Playgrounds Open at School 1, 4, Planseon, Msgr. Kelly, Fairway, Montgomery, Recreation House and Stadium.
  - 3:30 p.m. — Jr. Barbell Club — Stadium.
  - 6:00 p.m. — Senior League — Cubs vs. Giants — Stadium.
  - 6:30 p.m. — Peanut League — Aces vs. Yankees — Recreation House.
  - 7:00 p.m. — Sr. Barbell Club — Stadium.
  - 7:00 p.m. — Boys Club — Friendly House.
- TUESDAY**
- 9:00 a.m. — Playgrounds Open at Schools 1, 4, Planseon, Msgr. Kelly, Fairway, Montgomery, Recreation House and Stadium.
  - 3:30 p.m. — Jr. Barbell Club — Stadium.
  - 6:00 p.m. — Senior League — Braves vs. Phils — Stadium.
  - 6:30 p.m. — Peanut League — 1st Place vs. 4th Place — Recreation House.
  - 7:00 p.m. — Sr. Barbell Club — Stadium.
  - 7:00 p.m. — Boys Club — Friendly House.
- WEDNESDAY**
- 9:00 a.m. — Playgrounds Open at Schools 1, 4, Planseon, Msgr. Kelly, Fairway, Montgomery, Recreation House and Stadium.
  - 3:30 p.m. — Jr. Barbell Club — Stadium.
  - 6:00 p.m. — Senior League — Red Sox vs. Phils — Stadium.
  - 6:30 p.m. — Peanut League — 2nd Place vs. 3rd Place — Recreation House.
  - 7:00 p.m. — Sr. Barbell Club — Stadium.
  - 7:00 p.m. — Boys Club — Friendly House.

## Football Players Must Wear Mouthpieces Now

Junior and senior high school and college football coaches as well as leaders directing other groups participating in contact sports who need help or advice on obtaining fitted mouth protectors for their athletes should contact their local dentists.

In the fall, all players engaged in contact sports will be required to wear fitted mouth protectors under the rules of the National Federation of State High School Athletic Associations, the High School Athletic Association, the Junior College Athletic Association, and the National Association of Inter-collegiate Athletics.

According to nation-wide dental studies, a properly fitted mouth protector can greatly reduce injuries to the jaw and teeth, and minimize the chances of brain injuries caused by impact in the mouth region and face.

These fitted mouth protectors, which are available at nominal cost, are worn inside the mouth, and are designed to cushion the upper and lower teeth from the impact of sharp blows.

Rubber or plastic tooth positioners which are provided to some orthodontic patients are an acceptable substitute for mouth protectors.

Table clinics, demonstrating the techniques for the proper fitting and fabrication of these mouth protectors, have been presented to dentist-members of the Essex County Dental Society.

A resolution passed by the Board of Trustees of the New Jersey State Dental Society, of which the Essex County Dental Society is a component organization, has issued the following official statement relative to the use of mouth protectors:

"The component societies of the New Jersey State Dental Society are urged to cooperate with local school authorities in the responsibility for the provision of mouth protectors for students engaged in contact sports.

"Local school authorities are advised of the desirability of having a dentist supervise the fabrication and/or fitting of a mouth protector.

"Obviously, the fee involved will be influenced by variable local conditions but, in any event it should be just and equitable to both the school authorities and the dentists concerned."

Dr. George V. Newman of Livingston, Chairman of Public Information for the Essex County Dental Society, stated that all the professional dental groups in the country have endorsed the use of these protectors. Every dentist in Essex County will be available to lend whatever assistance local athletic and civic leaders may need in properly safeguarding the health of youngsters engaged in contact sports.

## Freehold Track Causing Interest In Racing Circles

Freehold Raceway this year is coming in for more than its share of conversation in harness racing circles. Most of the chatter is the result of the series of special September races named after historic events that took place in the Freehold area during the days of the Revolutionary War.

John D. Cronin, the raceway's executive vice-president, originated the series last year by staging famous — named dashes called "The Battle of Monmouth," "The Old Tannet Pace," "The Spirit of '76," and "The Molly Pitcher Pace."

All were invitation affairs with total purse distribution, including a high single dash purse of \$7,500 for the Molly Pitcher, of \$17,500. This year, the aggregate monies to be divided among the top finishers for the same dashes will add up to \$32,500. The Molly Pitcher, this year has been increased to \$10,000. There'll be three \$5,000 dashes and another for \$7,500.

The possibility exists of additional special races for the coming meeting since Freehold will operate the longest campaign in the track's history. The 1962 schedule calls for 60 clear racing days between August 6 and October 25. Cronin will shortly make an announcement concerning new special dashes.

Freehold Raceway also will meet its stabling area "population explosion" problem by adding 50 stalls to bring to 580 the total available for this year's meeting which begins Monday afternoon, August 6.

A heavy schedule of special events coupled with the longest campaign in the raceway's history is credited with the heaviest demand the track has ever had for stall space. This year's meeting will run 60 days, 10 more than the usual.

Besides the 580 on-site stalls, Cronin is busy leasing many on privately owned horse farms in the surrounding area to keep as many top-rated horses as possible ready for the impending season.

"No horse that our racing secretary thinks should be kept available will be turned down," said Cronin, who proudly fingered through the largest stack of applications ever received for a Freehold campaign.

Freehold is the state's only mutual trotting plant. It has grown in leaps and bounds. In the last four years the stabling area capacity has nearly been doubled.

## Betchick Will Study Animal Husbandry



**JOHN P. BETCHICK JR.**

A Belleville student has been admitted to the State University of New York Agricultural and Technical Institute at Delhi, New York. John P. Betchick Jr., 19, of 200 Beech Street, will study Animal Husbandry. The son of Mr. and Mrs. John Betchick, Sr., he graduated from Belleville High School in June.

Delhi Tech, a two-year college, is entering a period of unprecedented expansion this year. In the next six years, New York State plans a \$17,500,000 building program at Delhi. The college's enrollment is expected to increase during that time from its present level of 500, to about 1,000 students.

## Gene Napolio Is On Good Will Tour Of Europe

Gene Napolio, 20 Fairway Avenue, Belleville, representing Mount Saint Mary's College, Emmitsburg, Md., is on a five week good will tour of Europe. The tour left Washington, D. C., by chartered plane and will return there on July 10. The plane was christened as the Clipper Mount Saint Mary's and was blessed by Rev. James F. Kelly and Rev. Charles A. Procopio, representing the Faculty and Alumni of the Mount.

The tour, which is divided into two groups from the History and Political Science Department and the Music and Fine Arts Department of the College, will visit eight countries including England, Holland, Belgium, Luxembourg, Germany, Austria, Switzerland, Italy and France before returning home.

# Cited For Entry In Safety Poster Contest



Diana Kozlupa of 4 Hunkele Street, Belleville, a student at St. Peter's School, receives merit citation in American Automobile Association's National Safety Poster Contest from C. Stewart Mead, safety and education director of the New Jersey Automobile Club (AAA). In center is Sister Therese Catherine, art instructor. Diana's entry competed against more than 13,500 entries from 35 states and Puerto Rico.

## Robt. Gaccione Is Seton Hall Council Head



**ROBERT GACCIONE**

Robert Gaccione, son of Mr. and Mrs. Angelo Gaccione of 12 Baldwin Place, was elected Student Council President of Seton Hall College at the last meeting of the school year.

Bob entered Seton Hall in 1959. He was awarded a State Scholarship. He became interested in extra curricular activities, joining the St. Thomas More Pre-Legal Society, Intramural Sports and the Knights of Seton. Among his other accomplishments he also is a member of the college golf team.

Bob has held numerous positions. He was Junior Class Treasurer, Treasurer of his Fraternity, Phi Kappa Theta, Vice President of the Intramural Bowling league and is a sports writer on the Setonian, college newspaper.

**Tom Walsh Is New Secretary Of Toastmasters Club**

The Garden State Toastmasters Club No. 1049 installed new officers at a dinner meeting at the Rock Spring Court Restaurant. The new secretary is Tom Walsh of Belleville.

**THRILL TO THOROUGHBRED RACING AT BEAUTIFUL Monmouth Park**

THE RESORT OF RACING NOW thru AUG. 4

OCEANPORT, N. J.  
2 miles from Garden St. Hwy. Exit 105  
BUSES: Lv. Port Authority Term. 10 to 12:30

Sat., July 21 — \$50.00 MONMOUTH OAKS  
Wed., July 25 — MIDSUMMER HURDLE

Grandstand \$2 • Clubhouse \$4 • tax incl.  
CHILDREN UNDER 16 NOT ADMITTED

**POST 2:30 • Daily Double Closes 2:20**

**R SIMILAR MEDICINES MAY DIFFER GREATLY**

For instance, — basically all aspirin is chemically Acetyl-salicylic acid. But, when made into five grain tablets, without proper care and testing, some tablets may contain less or even no aspirin, while others have much more.

There are always firms that can produce any product for less by eliminating some labor and expensive testing that assures accuracy. When buying any medicine, we urge you never to get any but those made by time-tested firms with reputations to maintain. We follow this policy in our pharmacy.

**YOUR DOCTOR CAN PHONE US** when you need a medicine. Pick up your prescription if shopping nearby, or we will deliver promptly without extra charge. A great many people entrust us with their prescriptions. May we compound yours?

**ABBOTS DRUG STORE**  
531 Washington Avenue, Belleville, N. J.  
Reliable Prescriptions  
PL 9-8181

**MISS MARINARO RECEIVES DEGREE**

Miss Joanna Marinaro, daughter of Mr. & Mrs. John Marinaro, 21 Mt. Pleasant Avenue, has received a B.A. degree from New York State College. A major in early childhood education, she was a member of Beta Delta Chi Sorority. She will teach in the Kearny school system this September.

**RESERVE YOUR LANE NOW!**

Opening August 15, 1962

**BOWL - O - MAT**

New Jersey's Newest and Finest Bowling Lanes — so easy to reach

**House Leagues Forming**

- Mon. 6:30 — Ladies Hdp. (5)
- Mon. 9:00 — Mens 775 Scratch (5)
- Tues. 9:00 — Mens 815 Scratch (5)
- Wed. 9:00 — Mens Industrial League
- Thurs. 6:30 — Mixed Couples Hdp. League (4)
- Thurs. 9:00 — Mens 875 Scratch (5)
- Thurs. 9:00 — Mens Tavern League 875 Scratch (5)
- Fri. 9:00 — Suburban Essex "800" Major League
- Fri. 9:00 — Womens Scratch Classic

For Information Call GEO. KAZMIER, Mgr. PL 3-4665

**BOWL - O - MAT**

96 Aclington Ave., Bloomfield (Next to M.G.M. Records)

**California and Florida Specialists**

If You Must Move — Let Us Move You

**JOS. RAASER**

Moving And Storage Warehousing

Owned and Operated by **ROBERT DUKIN**

Expert Trained Personnel on All Jobs

All Types Moving Shipping Packing Crating

Across The Street or Across The Country

Free Estimates With No Obligation

PL 9-1822

494 CORTLANDT ST. BELLEVILLE

**BRAND NEW 1962 OLDSMOBILES**

88's • S-88's • Starfires • 98's • F-88's  
Station Wagons • Convertibles • Hardtops  
• Sedans All Models — All Colors

**NO MONEY DOWN**

From Only **\$18.87** per week

Puts you behind the wheel of a brand new '62 Oldsmobile

Including All Finance Charges — 1st Payment in Advance

**JUST ARRIVED**

SPECIAL FACTORY SHIPMENT IMMEDIATE DELIVERY

**OLDSMOBILE JETFIRES**

with fuel-injection turbo-jet engine. All Colors in Stock

Also CUTLASS COUPES AND CONVERTIBLES Plus a variety of air-conditioned cars

- Sky-High Allowances
- All Models Immediate Delivery
- Low-Cost GMAC Financing

**ALADDIN OLDSMOBILE**

53 WASHINGTON AVE. BELLEVILLE PL 2-2121

# why pay more?

## WHY PAY MORE FOR GROCERIES?



### SHOP-RITE HIGH QUALITY PRODUCE

California Red Blush	
<b>NECTARINES</b>	lb. 19c
Sweet Western	
<b>BING CHERRIES</b>	lb. 39c
Sweet California	
<b>SEEDLESS GRAPES</b>	lb. 29c
Vine Rinsed	
<b>CANTALOUPE</b>	each 15c
California Red Blush	
<b>PEACHES</b>	2 lbs. 25c
Red Pine Sweet	
<b>WATERMELONS</b> whole	39c
<b>LETTUCE</b>	10c

### WHY PAY MORE FOR DAIRY?

**SHOP-RITE**  
**MARGARINE**  
8 1-lb. pkgs. \$1

Breakstone	
<b>Cream Cheese</b>	5-oz. 9c
Shop-Rite Natural	
<b>Swiss Cheese</b>	5c
Shop-Rite	
<b>Cheese Spread</b>	2 1/2-lb. 69c
Blair's or Geiger	
<b>Fruit Drink</b>	2 1/2-lb. 25c

### WHY PAY MORE FOR DELI?

**HORMEL**  
**PICNIC HAMS**  
3-lb. \$1.79

Store	
<b>Sliced Bologna</b>	1/2-lb. 59c
Shop-Rite	
<b>Sliced Bacon</b>	1/2-lb. 59c
Schickhaus	
<b>All Meat Franks</b>	1/2-lb. 69c
Shop-Rite	
<b>All Meat Franks</b>	1/2-lb. 59c

### WHY PAY MORE FOR FROZEN FOODS?

**ORANGE or GRAPE**  
**Shop-Rite Juice**  
8 6-oz. cans \$1

Chopped or Leaf	
<b>Spinach Shop-Rite</b>	10 1/2-oz. 9c
Large Variety Morton or Banquet	
<b>Frozen Dinners</b>	2 11-oz. 79c
Shop-Rite Frozen	
<b>Chopped Beef Steaks</b>	16-oz. 85c
Shop-Rite Frozen	
<b>Chopped Beef Steaks</b>	16-oz. \$1.68
Shop-Rite Frozen	
<b>Green Peas</b>	6 16-oz. 89c
Shop-Rite Frozen	
<b>Asparagus Spears</b>	2 1/2-lb. 69c

### WHY PAY MORE FOR ICE CREAM?

Ice Cream	
<b>Holland Dutch Treat</b>	1/2-lb. 59c
Ice Cream	
<b>Meadow Gold</b>	1/2-lb. 79c
Ice Cream	
<b>American Hostess</b>	1/2-lb. 99c

Fiorella  
**OIL**  
\$1.29  
Gallon

Pride of the Farms  
**Tomatoes**  
5 2 1/2-cans \$1

Shop-Rite  
**BLEACH**  
gallon 39c

Shop-Rite  
**Strawberry PRESERVES**  
5 12-oz. jars \$1

Holland House  
**COFFEE**  
4c off lb. can 49c

Shop-Rite  
**Tea Bags**  
box of 100 59c

Dog Food  
**Red Heart**  
6 16-oz. cans 79c

Pillsbury, Gold Medal Enriched

**Heckers Flour** 5-lb. bag 49c  
5c Off! 3c Off!

**TIDE or FAB DETERGENT** reg. size 25c

10c Off  
**Giant Salvo** giant 59c

Colgate  
**Dental Cream** giant tube 37c

Tangy  
**Sniders Catsup** 5 large 20-oz. btl. \$1

10c Off  
**Vim Detergent** giant size 49c

Shop-Rite  
**Gelatin Desserts** 3-oz. pkg. 5c

Shop-Rite  
**Prune Juice** 2 qt. btl. 89c

Flavorful Candies  
**Ludens Jellies** 3 1/2-lb. pgs. \$1

Granulated  
**Sugar** Shop-Rite 5-lb. bag 48c

All Purpose  
**Wesson Oil** 24-oz. btl. 49c

Solid Pack Tuna  
**Seasons Tuna** 3 11-oz. cans \$1

Shop-Rite Whole  
**Green Beans** 2 #303 cans 37c

3c Off  
**Clorox Bleach** king size 65c

2c Off  
**Ajax Cleanser** 8 1/2-oz. cans \$1

Fruit Drink  
**Punchinello** Summer Treat 4 1/2-lb. cans \$1

Yuban  
**Snap-Off Bags** 16-oz. 39c

Instant Coffee  
**Instant Coffee** 6-oz. jar 95c

Ocean Spray  
**Cranberry Sauce** 7-oz. can 10c

Del Monte  
**Fruit Cocktail** 2 29-oz. cans 69c

Spice or Chocolate  
**Metrecal Wafers** 1/2-lb. 89c

Beechmont, Garber, Heinz Strained  
**Baby Foods** 10 4-oz. jars 89c

Convenient  
**Kraft Oil** 7c Off! 32-oz. btl. 35c

Good for Salads  
**Staley Corn Oil** 1/2-gal. \$1.79

Progresso  
**Olive Oil** quart 93c

Shop-Rite Sliced or Whole

**White Potatoes** 16-oz. can 10c

Del Monte or Green Giant

**Sweet Peas** 2 #303 cans 39c

Shop-Rite

**Dill Pickles** Kosher 11-oz. jar 49c

La Rosa #35 or Mueller's

**Elbow Macaroni** 2 1-lb. boxes 39c

Kraft

**Macaroni Dinner** 2 7-oz. pgs. 29c

Shop-Rite

**Noodles** Fine, Medium, Wide 4-lb. pgs. \$1

Orange or Grape

**Hi-C Drinks** 3 44-oz. cans 89c

Shop-Rite New Grape or

**Orange Drink** 3 44-oz. cans 79c

Welch Apple-Grape, Fiesta or

**Welchade** 3 32-oz. cans 89c

Solid Pack Light in Brine

**Shop-Rite Tuna** 4 6 1/2-oz. cans \$1

White Chunk

**Shop-Rite Tuna** 4 6 1/2-oz. cans \$1

Solid Pack White

**Starkist Tuna** 3 11-oz. cans \$1

Shop-Rite Coffee 45c

Reg., Drip Fine

**Ehlers Coffee** 1-lb. can 59c

**STALEY OIL**  
7c Off quart 59c

**FRUIT COCKTAIL**  
Shop-Rite 17-oz. can 19c

**SALAD OIL**  
Shop-Rite quart bot. 49c

Taste Seal  
**BARTLETT PEARS**  
3 29-oz. cans 95c

### SHOP-RITE HIGH QUALITY MEATS!

# LEGS O' LAMB

G.Q.M. GENUINE  
MILK FED  
SPRING LAMB

WHOLE OR HALVES  
**OVEN READY** 57c

WHOLE  
REGULAR

**49c** lb.

**SHOULDER LAMB CHOPS**

READY TO COOK CHICKEN PARTS

G.Q.M. FRESH KILLED • FOR BARBEQUE & FRYING

LEGS	BREASTS	LIVERS
lb. 45c	lb. 55c	lb. 69c

**CUBED STEAKS** TENDER NO WASTE 89c lb.

For Barbecue or Broiling	G.Q.M. Top Quality Steak Beef
<b>Rib Lamb Chops</b> 1/2-lb. 89c	<b>Rib Steaks</b> 7" Delicious Cut 1/2-lb. 69c
For Barbecue or Broiling	<b>Pineapple Roast</b> 1/2-lb. 69c
<b>Loin Lamb Chops</b> 1/2-lb. 99c	<b>Cottage Ham</b> 1/2-lb. 69c
Cut for Stew	<b>Shrimp</b> For Summer Salads 5-lb. 14.99
<b>Neck of Lamb</b> 1/2-lb. 19c	<b>Scallops</b> Nutritious 1/2-lb. 59c
For Braising or Stew	<b>Fresh Ground Beef</b> 1/2-lb. 39c
<b>Shank of Lamb</b> 1/2-lb. 29c	
Tender and Lean	
<b>Lamb Patties</b> 1/2-lb. 39c	

# FRYERS

WHOLE **25c** LB.

CUT UP 29c LB.

Prices effective through Saturday night, July 21, 1962. Not responsible for typographical errors. We reserve the right to limit quantities.

Delivery Service  
Free Parking

**ROYAL SHOP-RITE**

169 WASHINGTON AVE., BELLEVILLE

Store Hours: Sunday Closed, Mon. 9-9  
Tues. 9-9, Wed. 9-6, Thurs. 9-9,  
Fri. 9-10, Sat. 8-6

**SPRY SHORTENING**

1-lb. can **29c**  
3c Off!

THURSDAY, JULY 19, 1962



### Carnival And Show Given By Members Of 'Friendship 6'

A Carnival and Show were given by the members of the "Friendship 6" Club. The members are Betty Mann, president, of 35 Reservoir Place, age 11; Susan Drake, vice president, of 21 Reservoir Place, age 9; Susan Swering, secretary, of 22 Reservoir Place, age 9; Pamela Brown, treasurer, of 28 Reservoir Place, age 9; Sandra La Sala, of 49 Reservoir Place, age 11; and Claudia Lepte, of 255 Division Avenue, age 11. The carnival was held in the yard of the club's president.

### Two Are Given Awards For Seminar Work

John J. Colarusso, Jr., of 45 Center Street and James A. Jacobus of 288 Greylock Parkway, both of Belleville, have earned certificates for their active participation in the Union Junior College - Rutgers University Science Seminar.

They were among 140 students from 60 high schools in Union, Essex, Middlesex, Morris, and Somerset counties enrolled in the UJC-Rutgers Science Seminar for academically talented high school students.

The seminar, which was aimed at challenging the high school students intellectually, was sponsored by Union Junior College and Rutgers University under a grant from the National Science Foundation. It featured lectures in the fields of applied mathematics, astronomy, nuclear physics, ceramics, underwater archeology, conservation, and microbiology.

Colarusso and Jacobus are students at Belleville High School.

### OBITUARIES

#### Mrs. Margaret Doyle

Mrs. Margaret Doyle of 147 Crest Drive died on July 2. She was the wife of the late Thomas Doyle.

She was a native of Pittston, Pa., where she resided until nine years ago when she came to live in Belleville with her daughter, Mrs. Joseph Carney. She was a member of St. Mary's R. C. Church and of its Rosary Society.

In addition to her daughter, Mrs. Doyle is survived by two sons, John and Harold Doyle of New Haven, Conn.; two brothers, the Rev. Francis E. Mullen, M.M., of Bedford, Mass., and Charles Mullen of Pittston, Pa.; a sister, Mrs. John Swift of Ashley, Pa.; eight grandchildren and 14 great-grandchildren.

The funeral was on July 5 from a funeral home in West Pittston, Pa., to a solemn high mass at St. John's R. C. Church. Her brother was celebrant of the mass, assisted by members of the clergy of St. John's Church. Interment was in the parish cemetery of the church.



## ... For Cool Comfort and COOLER SAVINGS

PLUS FREE GIFTS WITH MERCHANTS GREEN STAMPS

**6 FULL DAYS OF VALUES IN ALL DEPARTMENTS PLUS FREE MERCHANTS GREEN STAMPS**

**100 FREE! EXTRA! 100**  
In addition to the stamps you always get with your purchases  
**MERCHANTS GREEN STAMPS**  
With Purchase of \$5.00 or More  
Except Cigarettes, Fresh Milk, Cream or Fair Trade Items  
Adults Only  
One Coupon Per Family  
Coupon Expires July 21st.

**50 FREE! EXTRA! 50**  
In addition to the stamps you always get with your purchases  
**MERCHANTS GREEN STAMPS**  
With Purchase of 2 1/2 lbs. or More  
**BONELESS BEEF ROAST**  
Adults Only  
One Coupon Per Family  
Coupon Expires July 21st.

**50 FREE! EXTRA! 50**  
In addition to the stamps you always get with your purchases  
**MERCHANTS GREEN STAMPS**  
With Purchase of Whole  
**WATERMELON**  
Adults Only  
One Coupon Per Family  
Coupon Expires July 21st.

**50 FREE! EXTRA! 50**  
In addition to the stamps you always get with your purchases  
**MERCHANTS GREEN STAMPS**  
With Purchase of 1 lb.  
**BUTTER**  
Adults Only  
One Coupon Per Family  
Coupon Expires July 21st.

**50 FREE! EXTRA! 50**  
In addition to the stamps you always get with your purchases  
**MERCHANTS GREEN STAMPS**  
With Purchase of 1 Dozen  
**FRESH EGGS**  
Adults Only  
One Coupon Per Family  
Coupon Expires July 21st.

**50 FREE! EXTRA! 50**  
In addition to the stamps you always get with your purchases  
**MERCHANTS GREEN STAMPS**  
With Purchase of 5 lb. Bag  
**SUGAR**  
Adults Only  
One Coupon Per Family  
Coupon Expires July 21st.

**537 FRANKLIN AVE., NUTLEY**  
Open Late Tues. and Thurs. to 9 P.M.  
Friday to 10 P.M. Mon., Wed., Sat. to 6 P.M.

**554 WASHINGTON AVE., BELLEVILLE**  
Open Late Mon., Tues., and Thurs. to 9 P.M.  
Friday to 10 P.M. Wed. and Sat. to 6 P.M.

**NATIONAL BRANDS - 4 to 10 lb. Average**

## YOUNG TURKEYS 37¢

**LEAN MEATY SPARE RIBS**

lb. 49¢

**BEEF POT ROAST**

Bone In

lb. 49¢

**CROSS-RIB ROAST**

Bone In

lb. 65¢

**ROCK CORNISH HENS**

1 1/2 lb. Avg.

lb. 45¢

**MEAT LOAF**

Beef, Pork & Veal

lb. 59¢

**GROUND CHUCK**

lb. 65¢

**SMOKED BONELESS BUTTS**

lb. 69¢

**CHICKEN LEGS**

Sold Only In 2 1/2 lb. Units Frozen **39¢**

**CHICKEN BREASTS**

Sold Only In 2 1/2 lb. Units Frozen **49¢**

PSG BRAND TOP QUALITY U.S. CHOICE

## STEAKS

**BONELESS SHOULDER** lb. **89¢**

**BONELESS SIRLOIN** lb. **99¢**

**CUBE STEAKS** Mided Rite Frozen lb. 79¢

**FYNE SPRED MARGARINE**  
**SKINLESS FRANKS**  
**LARGE FLOUNDERS**

HYGRADE OR RARITAN

FRESH CAUGHT

6 1-lb. pkgs. **\$1.00**

1-lb. pkg. **55¢**

lb. **39¢**

**DEL MONTE or LIBBY'S**  
**FRUIT COCKTAIL**

**5** 17 oz. cans **\$1.00**

**EHLERS or FOOD FAIR**  
**COFFEE**

YOUR CHOICE  
1 lb. can

**59¢**

**FLAVOR-KIST ICE CREAM**  
**HAWAIIAN PUNCH**  
**ITALIAN TOMATOES**

ALL FLAVORS 1/2 gal. **59¢**

Fresh Frozen 6 6 oz. cans **\$1.00**

BUTONI IMPORTED 4 35 oz. cans **\$1.00**

**NECTARINES**

CALIFORNIA LUSCIOUS

lb. **19¢**



EN ROUTE TO EUROPE

## THE FIRST 750 MILES ARE FREE

Now you too can sail Holland-America to Europe. The secret? Our new Thrift Season Budget Plans. Starting August 16, if you travel round trip, we'll top 10% off the already low Thrift Season fare. If you travel as part of an organized group of 25 or more, you'll all get a 25% discount. (That's like getting the first 750-or-so miles free—each way.) Starting October 1, if you take a 30-day-or-less "Excursion," you'll also get a 25% discount.

Same geniality and joviality as on our Summer "happy ship" sailings. Plus five gateway ports to all Europe—Southampton, Le Havre, Rotterdam, Cobl., Gwalay.

So see your travel agent for details.

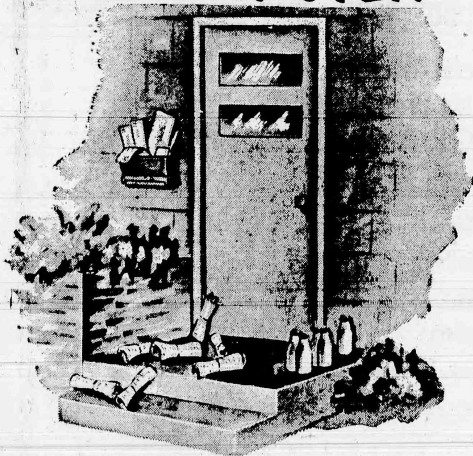
SAILINGS FROM NEW YORK:  
MAASDAM—Aug. 16; ROTTERDAM—Aug. 17  
STATENDAM—Aug. 24; NIJHUIS—Aug. 31  
ROTTERDAM—Sept. 7; MAASDAM—Sept. 10  
...and regular sailings thereafter.

SAIL A HAPPY SHIP TO EUROPE

**Holland-America Line**

20 BROADWAY, NEW YORK 6, N.Y.

## INVITATION TO DISASTER



An accumulation of newspapers, mail or milk on the porch is an invitation to burglary. Be certain to stop all deliveries to your home when you go on vacation. Just in case... for those hard to replace papers or valuables, rent a SAFE DEPOSIT BOX at Peoples National Bank and Trust Company.

**PEOPLES NATIONAL BANK AND TRUST COMPANY**

237 WASHINGTON AVENUE



Parking for Customers  
Across the Bank Building



Member Federal Deposit Insurance Corporation  
Member Federal Reserve System

SOCIAL AND CLUB NEWS OF COMMUNITY INTEREST

Arlene Schachter Receives Flora Loudon Scholarship

Arlene Carol Schachter of 208 Birch Brook Drive, was awarded the Flora Loudon Memorial Scholarship at a dinner meeting of the Tri-Town Business and Professional Women's Club of Belleville, Bloomfield and Nutley held recently at Friar Tuck Inn.

Miss Schachter is a June graduate of Belleville High School where she was editor-in-chief of the Monad, annual high school yearbook. She was exchange and make-up editor of the Spotlight, school newspaper, and a member of the band and orchestra, playing the oboe.

A member for the school Math Journal, the Math-Lite, participated in the senior "Lummy Tell Me True" and was a member of World Literature Club, Math Club and Physics Club.

She was a Counselor at Ro-Ti Camps in 1961. President of the Belleville-Nutley Chapter of Jun-



ARLENE SCHACHTER

Miss Jean Tassielli Attending Workshop

Miss V. Jean Tassielli of 9 Columbia Avenue, is one of 36 educators attending a three-week workshop on Human Relations in Professional Education at the Rutgers University Summer Session.

The workshop, given by the Rutgers Graduate School of Education, is designed as a "live-in, study, and work together" experience for members of a staff dealing with specific areas in human relations. The program will end July 21.

Miss Tassielli is a teacher at Mt. Hebron Elementary School, Montclair, and is a graduate of Caldwell College. She holds a Master's degree from Seton Hall University.

Sweet Adelines Elect Officers

The Board of Directors of West Essex Chapter of Sweet Adelines, Inc., an international women's barbershop - style singing organization elected the following officers for 1962-1963: Mrs. Thomas Templeton, Totowa Boro, President; Mrs. Harry Robinson, Montclair, Vice-President; Miss Carolyn Spatts, Caldwell Township, Treasurer; Miss Joan Scovill, Montclair, Corresponding Secretary; Mrs. George Hooper, Nutley, Recording Secretary.

West Essex Chapter meets every Thursday evening at the First Congregational Church, 40 South Fullerton Avenue, Montclair. If you wish to visit our group, please call Mrs. Lisie Johnson, Membership Chairman, at Capital 8-1541, or just come on in and join us.

Mrs. Herbert Tucker At PTA Workshop

Mrs. Herbert Tucker of Belleville, vice president of Region III, Essex County Council of Parent-Teacher Associations, attended the Parent-Teacher Workshop July 9 through 13, at Montclair State College. The New Jersey Congress, in cooperation with Montclair State, gave the five-day workshop for parent-teacher officers and members, and for teachers and future teachers.

Mrs. Tucker is active in the Belleville High School P.T.A.

Twins On Dean's Lists At State Colleges

Sharon and Lynn Levitt, twin daughters of Mrs. Edward Tuohy of 100 Nelson Street, Belleville, have been accepted for the Dean's List, Newark, excelling in Social Science at Newark State College and Lynn, majoring in mathematics at Montclair State College.

Lynn recently attended a tea at Chapel Hall, Montclair given by the Dean for honor students. Both Sharon and Lynn are employed for the third straight summer by the First National Bank of Jersey City. They will enter their sophomore year in September.

Authorized ELECTROLUX® (Factory Branch)  
CALL PT 3-8751  
24 Hour 23 1/2 Belleville Ave. Service  
SALES SERVICE SUPPLIES

**FREE STORAGE!**

ON YOUR WINTER WARDROBE

You Pay Only for Cleaning & Pressing  
WE WILL STORE FOR YOU FREE UNTIL WANTED

ALSO... FREE PLAID STAMPS

**One Hour Martinizing**  
239 Franklin Ave. Nutley  
Next to A & P  
Phone NOrth 7-9602

Mrs. Coronato Feted At Party On Her Birthday

Mrs. Robert Shaugnessy of 11 Irving Street, Belleville, entertained on Tuesday, July 3, at The Terrace Club, Nutley at a birthday party in honor of Mrs. S. J. Coronato of Belleville.

There were 15 guests from Nutley, Belleville, Clifton and Newark, including Mrs. William Atkins, Mrs. Thomas Dillon, Mrs. William Finnegan, Mrs. Robert Laterza and Mrs. Emil Senatore of Belleville; Mrs. Harry Binn, Mrs. Arthur Grutt, Mrs. Robert Kastner, Mrs. Richard Leber and Mrs. Joseph Mistretta of Nutley.

Also Mrs. Robert Barrett, Mrs. Frank McGee, Mrs. Raymond Relly and Miss Christine Relly of Newark and Mrs. William Liebau, Clifton.

The Stork Club

**Christopher L. North**

A second son, seven pound, 3 1/4 ounce Christopher-Lee, was born to Mr. and Mrs. Peter North of 168 Fairway Avenue, June 2 at Mountsinai Hospital, Montclair. His brother, Peter Gary, is three. Mrs. North was Miss Annette Kulello before her marriage. Mr. North is associated with Great Eastern Securities Sales.

Eugene F. Petrucci

Receiving congratulations on the birth of their first baby are Mr. and Mrs. Frank Petrucci of 316 Branch Brook Drive. A son, Eugene Francis, was born to them June 24 at Clara Maass Memorial Hospital. He weighs seven pounds, 13 ounces at birth. Eugene Francis' mother is the former Anne Duffy, daughter of Mr. and Mrs. William Duffy of Sayrevood South, N. J. Mr. Petrucci, son of Mr. and Mrs. William Petrucci, 31 Merrit Avenue, is a teacher and musician in the Hardyston Township schools, Franklin.

Diane DeAngelis

A third child and first daughter, Diane Marie, arrived June

Honeymoon In Bermuda



Shown on their honeymoon at the new Carlton Beach, Southampton Parish, Bermuda, are Mr. and Mrs. Joseph Pezzuti, Jr. of 370 Lake View Avenue, Clifton. The bride is the former Phyllis Puglia, daughter of Mr. and Mrs. Anthony Puglia of 287 Division Avenue, Belleville.

13 at Clara Maass Memorial Hospital to Mr. and Mrs. Fred De Angelis of 11 Washington Street. The six pound, 12 ounce lass joins Fred, Jr., 5 1/2, and Steven, 4 1/2. Mr. and Mrs. George Mawhir of 548 Franklin Avenue are the maternal grandparents; Mrs. Marie De Angelis of Yonkers, N. Y.,

**Unwanted Hair Removed Permanently by ELECTROLYSIS**  
10 Years Exp.  
MISS BERIAN, M.T.  
632 Mt. Prospect Ave. Newark  
HU 5-4305

**If You Are Planning To . . .**

**FINISH YOUR BASEMENT**

SEE US FIRST!  
**SPECIAL PRICES ON**

- PANELING
- CEILING TILE
- MARLITE
- DOORS
- 2 x 4's
- FIRRING
- FLOORING
- MOLDING

**WE CAN SAVE YOU MONEY!**

Complete Do-It-Yourself Information

**VIOLA BROS., INC.**  
MASON AND LUMBER MART  
180 WASHINGTON AVE., NUTLEY  
Complete Line Of Building Materials

**CALL NO 7-7000**

Three Peck Sisters Having Busy Summer Here, Abroad

Marcia Peck, daughter of Dr. and Mrs. Samuel W. Peck of 21 Cleburn Place, is spending the summer in Europe. During the past two weeks she has been in London, Paris, and Vienna. After visiting friends in Munderling and Salzburg, Austria, she will go to Italy and Switzerland. Marcia will be a senior at Belleville High School in September.

Another daughter, Katherine Peck, left last Monday for Puerto Rico where she will train for the next three months for the Peace Corps. On Tuesday she took part in the dedication of a new Peace Corps training center, Camp Crozier, named after a Peace Corps official who was recently killed in a commercial air disaster. The camp is located in Arecibo, on a mountain side 13 miles from the ocean. Katherine expects to go to Lima, Peru, on November 27 where she will work for two years among the people whose standard of living is the lowest. She is one of

Gloria Borkowski Named To Dean's List

Miss Gloria Borkowski, daughter of Mr. and Mrs. John Borkowski of 418 De Witt Avenue has been named to the Dean's List at Montclair State College for the Spring semester.

A Mathematics major, Miss Borkowski is a Belleville High School graduate. She will enter the sophomore class in September.

Boy Scout Moms Plan Card Party

The Mothers' Club of St. Mary's Boy Scout Troop 151 is making plans for a card party to be held Thursday evening, Sept. 27, in St. Mary's School gymnasium.

Mrs. Joseph Rose is general chairman, assisted by Mrs. John R. Abel, Mrs. James Russell, Mrs. Victoria Longin and Mrs. Charles Mackack.

a group of 60 training for the Lima project. Three weeks ago Katherine was graduated from the Rutgers College of Nursing.

A third daughter, Diana, is at Camp Undercliff on Lake Placid, N.Y., where she is studying violin. Next week she will play the part of Marian, the librarian, in a performance of The Music Man. Diana will be a freshman at Belleville High School in the fall.

**FREE CATALOG**  
SUCCESSFUL PART TIME—FULL TIME  
**CAREERS**  
**Electrolysis**  
Phone Visit or Write  
**KREE**  
INSTITUTE OF ELECTROLYSIS  
WORLD FAMOUS TRAINING CENTER  
Dept. Q., 152 W. 42nd St., N.Y. 36  
BR 9-4210

Strenuous exercise and hot humid days are not good mixers—both add to the work of the heart, Essex County Heart Association says.

**Pro-tek-tiv**  
EXTRA SUPPORT SHOE

has these important features:

- LONG LEATHER COUNTERS
- BROAD STEEL SHANK
- ANATOMIC HEEL
- INSIDE WEDGE IN HEEL

Also Regular Infant Shoes  
Priced 4.99 to 7.95  
According to Size

Over 25 Years of Experience  
In Proper Shoe Fitting

**MODERN TRED SHOES**  
238 Franklin Ave.  
At The Center  
Nutley, N. J.  
NO 7-5431  
Open Mon. & Fri. Eve.  
Parking - Rear of Store

**PARISO BROS., INC.**

**\$50,000**

**MID-YEAR CLEARANCE SALE**

**BRAND NAMES — SAVE UP TO 50%**

**BUY NOW — JULY ONLY**

**Drexel - Flex Steel - Kent - Coffey**  
**Virtue Bros. - White Furniture Co.**  
**Viko - Daystrom - Simmons - Bassett**

- 185 Kitchen and Dinette Sets . . . . . \$ 29.50 & up
- 27 Dining Room Suites . . . . . \$199.00 & up
- 30 Living Room Suites . . . . . \$199.00 & up
- 35 Bedroom Suites . . . . . \$149.00 & up
- T.V. Rooms (Complete) . . . . . \$129.00 & up
- Bedding by Simmons, Sleepmaster, Seeley and Eclipse . \$ 29.00 & up
- Hollywood Sets . . . . . \$ 49.50 & up

LAMPS	\$5.00 & Up	ODD BEDS	\$10.00 & Up
ODD NIGHT TABLES	\$10.00 & Up	ODD COCKTAIL TABLES	\$14.95 & Up
ODD END TABLES	\$10.00 & Up	ODD KITCHEN CHAIRS	\$4.95 & Up
ODD BAR STOOLS	\$4.95 & Up		

**Immediate Delivery!!**

**PARISO BROS., INC.**

FURNITURE

Irvington Store Located 1055 Clinton Avenue

Open 'til 9 P.M.  
Mon., Wed., Fri.  
16 Washington Ave., Belleville

Open 'til 6 P.M.  
Tues., Thurs., Sat.  
PL 9-2273



# Durkee Sees Bright Future For Education In Belleville

"A great day lies ahead for education in Belleville!" So says Dr. Frank M. Durkee, superintendent of schools, in a special issue of Shop Talk, teachers workshop publication of the Belleville schools.

"Victory, December 21, 1961," continues Dr. Durkee, "provided the \$2,382,000 savings necessary to provide the needed physical facilities for better education. Each and every day our staff moves ahead on preparation for the educational implementation of the new facilities and the additional space realized in the elementary schools. No longer do we look back or look with hopelessness on our teaching situations. Now we can look ahead with the thrill that can only come

from progress. We are moving ahead!"

Dr. Durkee reports that 13 staff members have now visited junior high schools and have reported their thinking. "From them we can learn much that will help us move ahead effectively in the junior high school organization," the superintendent says. "This is the first phase of staff orientation to the new organization that will emerge in our school system with the completion and occupancy of Belleville Senior High School."

In the same issue of Shop Talk, Michael T. Rossmilla, general supervisor, comments that the transfer of seventh and eighth grade students from the elementary schools to join the ninth graders in a junior high school implies considerably more than the mere change to a different "base of operations."

"Junior high school," says Mr. Rossmilla, "is recognized as secondary education and it affords the early adolescents many more opportunities than are available under the K-84 arrangement."

"Staff organization requires considerable thought."

"Most important is the attitude of the staff members regarding their function as teachers in the junior high school. Therefore, it would be wise to draw up a philosophy of the school in the early states to give teachers a frame within which they can operate. No amount of administrative planning will replace the ingenuity of the teacher in his ability to make decisions within an existing philosophy."

Henry L. Miller, head of the Social Studies Department, remarks: "Junior high schools today are demonstrating an increased interest in, and an appreciation for, an effective and continuous guidance program. We in Belleville must meet the tide and provide guidance services that will effectively assist young adolescents to make wise choices, and to solve their individual problems during these transitional years."

## Wehmann Gains High Honors As History Major



HOWARD WEHMMANN

Howard Wehmann, a history major, graduated from the University of Maryland with high honors. He received a B.A. degree. A former resident of Belleville, he attended School 3 and graduated from Belleville High School.

Howard, son of Mr. and Mrs. John Wehmann of 84 Alpine Dr., Packanack Lake, was awarded the Woodrow Wilson fellowship, a \$2,000 fellowship to the University of Michigan, and a N.D.E.A. fellowship to Northwestern University for \$6,600. In his junior year at Maryland he was awarded fellowships totaling \$15,600 to four top colleges.

In the fall he will enter Yale University to attend graduate school and obtain a Ph.D. in history and African studies.

While at Maryland he belonged to the Civil War Club and was an outstanding R.O.T.C. cadet. He is a member of Phi Alpha Theta honor society (history) and Phi Kappa Phi, senior academic honor society. He also belongs to the Mississippi Valley Historical Association, a professional organization.

## Scouts From West Indies To Visit Here

Two lucky Senior Scouts from Jamaica in the British West Indies have been selected to spend three weeks in the Robert Treat Council, Boy Scouts of America during the latter part of July.

They will have an opportunity to visit some of the industrial plants and businesses in Belleville, Irvington and Newark. They will probably call on Mayor Robert M. Luteria and it is expected that they will meet Gov. Hughes at Trenton.

The host committee includes Gunnar Anderson, vice president of the Mutual Benefit Life Insurance Company, George R. Gordon, acting superintendent of the Irvington Schools; Marvin Robinson, manager of Douglas

Harrison Apartments of the Prudential Insurance Company.

The committee will arrange for a trip to New York City to include a visit to the U.N. and a big league ball game.

While in the Council area, they will live in Scout homes and spend a week or more at Camp Mohican at Blairstown.

## Belleville-Nutley Buick Co. Has New Manager

George W. Symonds, president of Belleville-Nutley Buick Company, has announced the appointment of John A. Johnson of Paterson as service manager for the local Buick agency. Johnson has had a long career in the automobile servicing field. For the past ten years he has been service manager with the Buick agency in Pompton Lakes and prior to that with a Chrysler organization in Paterson.

## GANTNER'S HARDWARE DEPARTMENT STORE

### SUMMER CLEARANCE SPECIALS (1 WEEK ONLY)

50' Plastic Hose	Spec.	2.44
50' Plastic Reinforced Hose	Spec.	5.50
Webb Folding Chair	Spec.	4.40
Webb Folding Deluxe Chair	Spec.	5.99
Outside White House Paint	Spec. - Gal.	3.75
Deluxe 1 Gallon Plastic Jug	Spec.	4.00
18" Brazier	Spec.	4.90
24" Brazier	Spec.	6.90
24" Brazier with hood and motor	Spec.	12.90
*LUGGAGE — Specials		
Softside Plaid — 24"		7.77
Softside Plaid — 26"		10.88
Blue Vinyl Covered Luggage — 26"	Spec.	9.83
29"	Spec.	12.83

Summer Hours: Mon. to Thur. 8:30 to 8:30  
Friday 8:30 to 9 — Saturday 8 to 6:30

\* Plus Tax

## Your Best Buys Are Always At Gantner's

160 Franklin Ave., Nutley 10, N. J.  
NO 7-6622 — 3 FREE PARKING

OPEN DAILY 8:30 TO 8:30  
FRIDAY 8:30 TO 9 — SAT. 8 TO 8

## SCHIFTER RAMBLER SAVES YOU \$\$ WITH . . .

# off-the-floor vacation specials



RAMBLER CONVERTIBLES

LOW DOWN PAYMENT



RAMBLER WAGONS

EASY TERMS



RAMBLER SEDANS

Take A Demonstration Ride

BIG VALUES . . . AMERICANS, CLASSICS, AMBASSADORS  
COME IN TODAY AND SAVE

## SCHIFTER RAMBLER Inc.

89 WASHINGTON AVE.

NO 7-2233

NUTLEY

## MIDNIGHT

Tomorrow, Friday Night, July 20th - 9 To 12 P.M.

It happens only twice a year. It's our liveliest shop and save event. Hundreds of exciting bargains. Be here Friday at 9:00 P.M. and bring your friends and neighbors to join in the really Great Savings.

3 Hours Only — Come Early While Sales Items Last



"STORE FOR MEN AND BOYS"

FREE PARKING — AIR CONDITIONED




879-83 FRANKLIN AVENUE  
NEWARK

Straight Down Franklin Avenue to City Subway

\*Except Fair Trade Items

**A one-pool for work?**  
**Why not one for church?**  
Invite your neighbor to join you at church this week.



**CHURCH LISTINGS**

**Belleville Reformed Church**  
Wash and Rutgers Streets,  
Rev. Thomas Ten Hoeve,  
Minister.  
Worship on Sundays during July will be at 10 a.m. Service on Sunday, "Why Turn is Religion."  
The Church will meet Friday, July 20, at 8 p.m.

**Grace Baptist Church**  
Overbrook Avenue and  
Broad Street  
Rev. Albert Lawson, Pastor  
Morning worship and Sermon at 10:30 a.m. Service topic: "Beyond the Horizon."  
Sunday School, 10:45 a.m.

**Cong. Ahavath Achim**  
Belleville Jewish Center,  
126 Academy Street,  
Rabbi Victor Cohen  
Friday—Services, 8:30 P.M. to 9:15 P.M.  
Saturday—Services, 9 A.M.  
Sunday—Services, 10 A.M.

**Belleville Assembly of God**  
174-176 Holmes Street  
Rev. Anthony D'Quattro, Pastor  
Sunday—9:45 a.m. Sunday School; 10:45 a.m. Morning Worship.  
Wednesday—7:45 p.m. Bible Study; 7:50 p.m. Inspirational Service.

**Montgomery Presbyterian Church**  
622 Mill Street  
Rev. Arthur Stevens, Pastor  
Sunday services of divine worship are held throughout the summer months at 9:30 a.m. Church-wide child care is provided for infants and small children.

**Second Baptist Church**  
Stevens and Academy Street  
Rev. Henderson Gojoseon,  
Pastor  
Sunday—9:30 a.m. and 11 a.m. Morning worship service.

**Temple B'nai Israel**  
122 Centre Street,  
Nutley  
Rabbi Hyman Dausig  
Friday—8:30 p.m. Evening service; 9:30 a.m. Sabbath service. Morning service: Midnight prayer service.

**Christian & Missionary Alliance**  
Upton and Rancos Aves., Nutley  
Rev. Anthony Gauthier, Pastor  
Sunday 9:30 a.m. Family Sunday School; 10:45 a.m. Sabbath service. To Adult Bible Group 11 a.m. Worship Service. Rev. Gauthier, 6:30 p.m. Junior and Senior Alliance Youth Fellowship. 7:30 p.m. Song and Praise Service.

**Bethany Church**  
(Evangelical Lutheran)  
Joraleman and New Streets  
Rev. Robert L. Siegel, Pastor  
Sunday—9:30 a.m. Sunday School; 10:45 a.m. and 11 a.m. Worship Service; 7:30 p.m. Evening Service.

**Christian Apostolic Church**  
77 Wallace Street  
Rev. Joseph Grinnelli, Pastor  
Sunday 9:45 a.m. Worship service in both English and Italian. And Sunday School. Tuesday—7:30 p.m. Service in English.

**Complete Heating Systems**  
For All Your Heating Needs Call  
**PLYMOUTH 9-1907**  
46 Eugene Pl. Belleville  
OUR FUEL OIL MAKES WARM FRIENDS

How low low cost installation prices.  
Low cost service contract including parts coverage.  
Convenient monthly budget plan.  
24 hour emergency service.

**HILLTOP RIVIERA OIL CO., INC.**

**WILLIAM V. IRVINE & SON**  
MEMORIAL HOME  
For more than fifty years it has been our privilege to render personal service and offer friendly counsel to bereaved families. Our service is performed with reverence and dignity and is always within the means of all.

276 Washington Ave. Belleville, N.J.  
Plymouth 9-1114  
William V. Irvine Jr., Director

**Silver Lake Baptist Church**  
166 Franklin Street  
Rev. R. Pascale, Pastor  
Sunday—10 a.m. Bible school for all ages; 11 a.m. Morning Worship Service; 6:30 p.m. Youth Service.  
Wednesday—7 p.m. High School Church rehearsal.  
Friday—10:30 p.m. Junior Choir rehearsal; 8 p.m. Senior Choir rehearsal.

**St. Anthony R. C.**  
58 Franklin Street  
Rev. Titian Mensges  
Thursday—7:30 and 9 a.m. personal Novena and Devotions to Our Lady of the Miraculous Medal and St. Anthony. Benediction follows.  
Friday—Masses tomorrow, at 7, 7:30 and 8 a.m.  
Saturday—7:30 and 8 a.m. Mass; 8:30 a.m. and 12 noon Masses in the church and 8:30 a.m. and 12 noon Masses in chapel at 8:30 a.m. and 12 noon. Nine o'clock Mass in church in the children. 2 p.m. Sacrament of Baptism.  
Monday—7:30 and 8 a.m. Mass; Tuesday—7:30 and 8 a.m. Mass; Wednesday—7:30 and 8 a.m. Mass.

**Little Zion, U.A.M.E.**  
154 Stephen Street  
Rev. Mary A. Farrar, Pastor  
11 a.m. Worship service, with the psalm in church.

**St. Peter's Church**  
159 William Street  
Rev. Magr. J. M. Kelly  
Thursday—6:30, 7:30 and 8 a.m. Mass; 7 p.m. High School Religion and C.O.  
Friday—Masses at 6:30, 7:30 and 8 a.m.  
Sunday—6:30, 7, 8, 9 (children) 10, 11 a.m. and 12 noon Masses in the church and 8:30 and 10:30 a.m. in the new auditorium. Benediction of Most Blessed Sacrament follows 11 o'clock Mass. Sunday School follows 8 o'clock Children's Mass. 2 p.m. Sacrament of Baptism.  
Monday—8:30, 7:30 and 8 a.m. Mass; Tuesday—8:30, 7:30 and 8 a.m. Mass; Wednesday—8:30, 7:30 and 8 a.m. Mass.

**Feuamith Memorial Presbyterian Church**  
Union Avenue and Little Street  
George L. Van Loosen, Pastor  
Through Sunday, September 2, services of morning worship at 10 a.m.

**Temple Menorah**  
936 Broad Street,  
Bloomfield  
Rabbi Nathan Fish  
Friday—8:30 p.m. Laymen service; Saturday—11 a.m. Junior congregation under the direction of Rabbi Fish.

**Wesley Methodist Church**  
Washington Ave. at Academy St.  
Rev. Paul T. Woodward  
Starting July 16th and continuing through September 2nd there will be 20:00 A.M. Union Services held at Feuamith Presbyterian Church.

**Christ Episcopal Church**  
393 Washington Avenue  
Rev. Fred Long, Rector  
7:00 A.M. Holy Communion;  
9:00 A.M. Morning Prayer and Sermon.

**WHEN DEATH OCCURS CALL**  
F. Douglas Wadsworth

**WADSWORTH FUNERAL HOME**  
524 Union Avenue  
Plymouth 9-2879

**NON-SECTARIAN**  
KIERNAN FUNERAL HOME  
GEORGE F. KIERNAN  
101 UNION AVE. BELLEVILLE, N.J.  
PLYMOUTH 9-3593

**Legion To Help In Drive Against Dope**

Belleville Post 105, American Legion, last week endorsed the pledge of the Mayor and Council to eliminate the narcotic drug problem in Belleville.

Under direction of John N. Kay the Post's first vice commander and its acting commander, Post 105 adopted a resolution backing the new government of Belleville in its stand on the dope problem and offering the services of its members, the facilities of the Post home and to cooperate in every way to destroy illegal drug traffic locally.

The resolution has been transmitted to Town Clerk Eugene G. Barnet to convey to the officials and place on the Town's official records.

The complete text of the resolution follows:

**RESOLUTION**  
WHEREAS, Belleville Post No. 105, The American Legion, Department of New Jersey, is an association of war veterans dedicated among other things "To maintain law and order;" and  
WHEREAS, The American Legion through its Child Welfare program is most particularly concerned with the health, welfare, and fitness of American children and youth; and  
WHEREAS, In the public press and other news media there are increasing reports indicating that narcotic drugs and barbiturates and derivatives thereof are being illegally used by some children and youth affecting their morals, injuring their health, and resulting in addition to drugs contributing to delinquency and death; and  
WHEREAS, The Mayor and Council of the Town of Belleville, New Jersey, recognizing the existence of this problem and its effect upon the health and welfare of the youth of our community have declared a "total war" against those who illegally

**Camp Ro-Li Is Now Open For 17th Season**

Camp Ro-Li on Glen Wild Lake is now open for its 17th season. This camp, well known to many Belleville area residents, is sponsored by the Rotary and Lions Clubs of this community with assistance from the Belleville Foundation.

The camp is under the direction of Mr. and Mrs. William Sandmeyer, better known as "Miss" Dot and Mr. Bill, who have been with the camp for five years.

Mr. and Mrs. Don Fague, who received their college training at Glassboro State College, serve as assistant directors in charge of activities. Mrs. Evelyn Berner, camp nurse, is also in her sixth year at Ro-Li.

The camp boasts a mature staff consisting of Nan Jordan, who attends Trenton State College; Carol Kitchen, who attends LaSalle College; Gail Kenworthy, a senior cheerleader at Belleville High School; John Otto, a junior at Lyncoming College; Bob Stein, who will be a freshman at Tampa (Fla.) University; Don Muhlenbaur, a freshman at Albright College; Tom Holzapfel, who attends Montgomery High School.

Meals and maintenance are under supervision of Paul Epstein of Rutgers University, working under him are Egon Patz, who will be attending a school in Chicago, Ill., next year, and Nicholas Candura, Allan Gruber and Scott Kearney, all of Belleville.

Campers from the Belleville area are Bonnie Brehm, Eileen Symonies, Betty Jane Gray, Kathleen Ricca, Rose Ricca, Sheila Brennenman, Joan Brennenman, Michael Pagliola, Valerie Frey, Dianne Picotoli, Jayme Freedman, Vicki Viggiani, Sandy Squitieri, Pamela Pomarico, Carol Thompson, Gail Tuchman, Janice Semienick, Patricia Binkiewicz, Patricia Tartaglia, Michelle McTaggart, Linda Borgia, Marie Hassel, Susan Rubin, Kathleen McGarry and Carrolanne Crump.

use or sell or make available to your youth narcotic drugs in any form.

NOW, THEREFORE, BE IT RESOLVED by Belleville Post No. 105, The American Legion, Department of New Jersey, in regular meeting assembled on Monday, July 9, 1962, that we do endorse the pledge of the Mayor and Council to eliminate the narcotic drug problem in our community; and  
BE IT FURTHER RESOLVED that Belleville Post No. 105, The American Legion, do offer the services of its members, the facilities of its Post Home, and to cooperate in every possible way to destroy illegal drug traffic in our town; and  
BE IT FURTHER RESOLVED that a copy of this resolution be transmitted forthwith to the Clerk of the Town of Belleville, New Jersey, to record and convey to the elected officials of the town.

**LEGAL NOTICE**  
Chapter No. 1209  
REPORT OF CONVEYANCE OF THE PROPERTIES NATIONAL BANK & TRUST COMPANY OF NEW JERSEY, IN THE ESTATE OF NEW JERSEY, AT THE CLOSE OF BUSINESS ON JUNE 30, 1962 PUBLISHED IN RESPONSE TO CALL MADE BY COMPTROLLER OF THE CURRENTLY EXISTING SECTION 221, U.S. REVISED STATUTES.

**ASSETS**  
Cash, balances with other banks, and cash items in process of collection \$ 2,540,084.41

United States Government obligations, direct and guaranteed	2,062,600.28
Obligations of States and political subdivisions	2,904,797.81
Corporate stocks (including \$20,500.00 stock of Federal Reserve Bank)	37,500.00
Bank deposits (including \$27.38, overdrafts)	9,341,829.46
Loans and discounts (including \$17,982.50, furniture and fixtures \$12,990.00)	84,944.15
Bank—premises—owned are subject to home loans not assumed by bank	91,735.16
Other assets	22,867,555.27
<b>TOTAL ASSETS</b>	<b>22,867,555.27</b>
Deposits of individuals, partnerships, and corporations	1,265,023.70
Time and savings deposits of individuals, partnerships, and corporations	10,205,337.47
Deposits of States and political subdivisions	474,150.26
Certified and officers' checks, etc.	1,258,312.01
Deposits of States and political subdivisions	292,454.80
<b>POSTS</b>	<b>\$3,587,311.34</b>
Total demand deposits	\$2,265,600.00
(a) Total time and savings deposits	\$1,321,711.34
(b) Total time and savings deposits (including \$10,000.00, reliable value \$776,000.00)	120,000.00
Undivided profits	1,130,000.00
Reserves and retirement account for preferred stock	144,794.12
<b>TOTAL LIABILITIES</b>	<b>21,438,081.15</b>
<b>CAPITAL ACCOUNTS</b>	
Capital Stock:	
(a) Common stock, total par \$10,000.00	120,000.00
(b) Preferred stock, total par \$80,000.00, reliable value \$776,000.00	1,130,000.00
Surplus	144,794.12
<b>TOTAL CAPITAL ACCOUNTS</b>	<b>1,254,794.12</b>
<b>TOTAL LIABILITIES AND CAPITAL ACCOUNTS</b>	<b>22,867,555.27</b>

**MEMORANDUM**  
Assets pledged or assigned to secure liabilities and for other purposes  
\$ 766,000.00  
L. Frank J. Boien, Cashier, of the Belleville-based bank, do hereby declare that this report of condition is true and correct to the best of my knowledge and belief.  
FRANK J. BOIEN  
We, the undersigned directors attest the correctness of this report of condition and declare that we have examined the same and believe it to be true and correct.  
B. THOMAS ATKIN  
RAY D. FOSTER  
OTMAR B. BART  
Directors  
Fee: \$25.00

**LEGAL NOTICE**  
TAKE NOTICE that application has been made to the Town Council of the Town of Belleville to transfer to Jeremiah P. Lenihan and Mary E. Lenihan a lot at 303 Washington Ave., Belleville, New Jersey, the property of the Belleville Municipal Building, Belleville, New Jersey.  
Objections, if any should be made immediately in writing to Eugene Barnet, Clerk of the Town of Belleville, Municipal Building, Belleville, New Jersey.  
JEREMIAH P. LENIHAN  
313 Richfield Terrace, Newark, N. J.  
MARY E. LENIHAN  
21 Richfield Terrace, Newark, N. J.  
Fee: \$25.00

**SURROGATE'S NOTICE**  
Dated: June 12, 1962  
Estate of JEREMIAH P. LENIHAN, deceased.  
Present to the order of DAVID H. WITENER, Surrogate of the County of Essex, this day made on the application

**KARL'S**  
Member Marta Co-Op Buying Group  
125 Independent Dealers  
Lowest Prices And Home Town Service

**PORTABLE T.V.**  
Zenith - RCA - GE - Magnavox  
Philco - Travler - Admiral  
From \$77

**AIR CONDITIONERS**  
Feddors - Carrier - Admiral  
GE - Philco - Weibilt - Edison  
1 H.P.  
7 1/2 Amps.  
From \$128

**AUTOMATIC WASHER**  
Maytag - GE - Frigidaire  
RCA - Whirlpool - Norge - Kelvinator  
Speed Queen  
From \$158

**ADMIRAL AC-DC RADIO \$9.88**

**REFRIGERATOR**  
Frigidaire - GE - Kelvinator  
Philco - Norge - Admiral  
From \$148

**AUTOMATIC DRYER**  
Hamilton - Frigidaire - GE  
Norge - Kelvinator - RCA - Whirlpool  
From \$117

**RANGES**  
Caloric - Pappan - Hardwick  
Roper - Weibilt - Glenwood  
From \$68

**MAYTAG WRINGER \$88**

**Admiral Glock Radio \$14.88**

**Zenith Transistor Radio case, earphone, bat. \$19.95**

**COLOR T.V.**  
RCA - Zenith - Magnavox  
Base Opt.  
with Acceptable Trade  
From \$399

**FREEZER**  
GE - Frigidaire - Admiral - Norge  
Philco - Frost Queen  
From \$128

**DISHWASHER**  
Kitchenaid - GE - Frigidaire  
Westinghouse  
From \$139

**Refrigerator made in Italy \$139**

**KITCHEN SINK \$69.00**

**Philco Stereo Am-Fm Radio \$199**

**T.V. CONSOLE**  
Zenith - RCA - Magnavox - GE  
Philco - Admiral  
From \$178

**T.V.-STEREO COMBO**  
Zenith - RCA - Magnavox  
Philco - Admiral  
From \$298

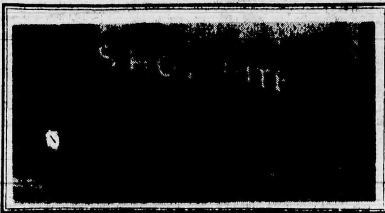
**STEREO-CONSOLE**  
Zenith - Magnavox - RCA  
Fisher - Philco  
From \$149

**KIERNAN**  
Dignified Funeral Service  
AVAILABLE TO ALL REGARDLESS OF FINANCIAL CIRCUMSTANCES  
NON-SECTARIAN  
KIERNAN FUNERAL HOME  
GEORGE F. KIERNAN  
101 UNION AVE. BELLEVILLE, N.J.  
PLYMOUTH 9-3593

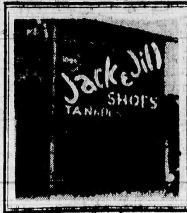




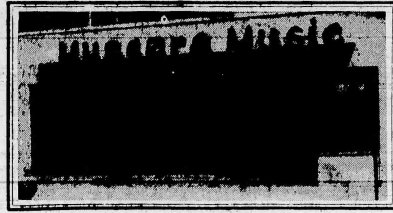
1



2



3



4



5



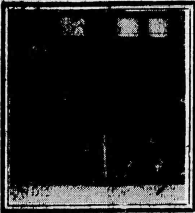
20

The Boston Store  
533-540 Washington Ave.



19

Vee Bee Esso  
Franklin Ave. cor. Joralemon



18

The Crescent Press  
156 Washington Ave.



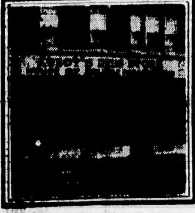
17

Christian's Restaurant  
281 Washington Ave.



16

Belleville Times-News  
246 Washington Ave.



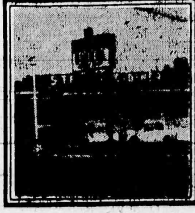
15

Abbott's Drug Store  
301 Washington Ave.



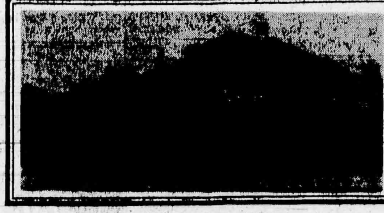
14

Mary's Alteration Shop  
258 Washington Ave.



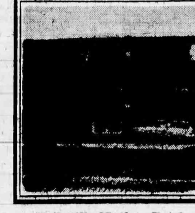
13

Stefano's Diner  
Park Ave. & Miter Rd., Nutley



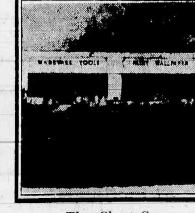
12

De Witt Savings & Loan  
463 Washington Ave.



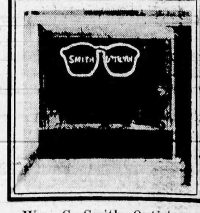
11

Belleville-Nutley Buick  
66 Washington Ave.



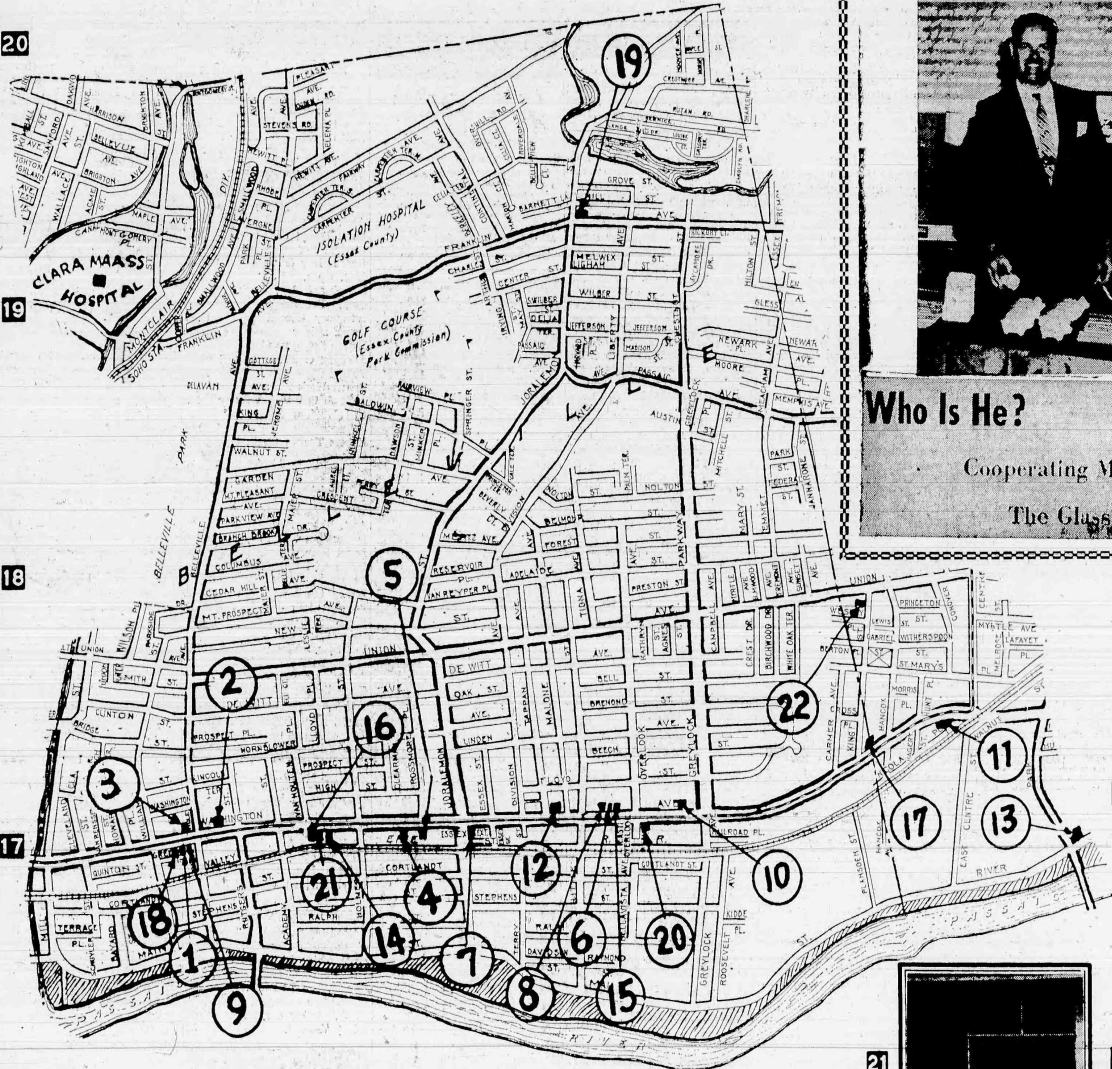
10

The Glass Co.  
535 Washington Ave.



9

Wm. C. Smith, Optician  
140 Washington Ave.



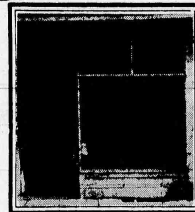
**DeWITT SAVINGS**

**Who Is He? Where Is He?**

Cooperating Merchant:

**The Glass Co.**

Alterations	14-MARY'S ALTERATION SHOP	Newspaper	16-BELLEVILLE TIMES-NEWS
Automobiles	11-BELLEVILLE-NUTLEY BUICK	Optician	9-WILLIAM C. SMITH
	4-MEAD - FORD	Restaurant	17-CHRISTIAN'S RESTAURANT
Bakery	1-GOECKELER'S QUALITY BAKERY	Savings & Loan Assn.	6-JOHN'S RESTAURANT
	12-ZINICOLA'S BAKERY	Service Stations	12-DE WITT SAVINGS & LOAN
Diner	13-STEFANO'S DINER	Stations	19-VEE BEE ESSO
Department Stores	20-TIME BOSTON STORE	Taxis	18-THE CRESCENT PRESS
Drugs	15-ABBOTT'S DRUG STORE	Towing Service	1-BELLEVILLE CAB
Foods	1-ROYAL SHOP-RITE	Travel Bureau	5-JANNARONE'S SHELL STATION
Footwear - Men's - Women's	3-TANNEN'S SHOE SHOP	Wallpaper - Paints - Glass	21-BELLEVILLE TRAVEL SERVICE
Music	4-MUSCARA MUSIC CO.		10-THE GLASS CO.



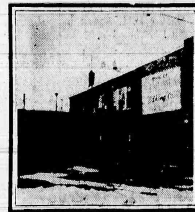
21

Belleville Travel Service  
246 Washington Ave.



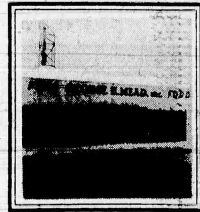
7

Goeckeler's Quality Bakery  
Washington Ave. cor. Joralemon



22

Zinicola's Bakery  
King St. ar. Union Ave., Nutley



8

Mead - Ford  
515 Washington Ave.



IF YOU  
WANT  
TO...

# BUY, SELL, TRADE, RENT, HIRE, HELP

# CALL PL 9-3200

TO PLACE YOUR CLASSIFIED

## CLASSIFIED ADVERTISING

Adv. will appear in The Nutley Sun and  
Belleville Times-News

### Over 56,000 Readers

25 WORDS OR LESS  
Each Additional Word 5c

1.75

25 WORDS OR LESS THREE TIMES  
Each Additional Word 16c

4.00

Annual Rate 1.25 Per Week

Ads Must Be In By 12 Noon Monday

## AGRICULTURE

**SCREENED TOP SOIL - FILL**  
Excavating, landscaping, sod-  
ding, land clearing. Let us solve  
your drainage problem. French  
drain, sod, and truck rentals.  
Armando Vocaturo - telephone  
Plymouth 9-6640.

## CARPENTERS AND BUILDERS

**A. PHILIP**  
Carpenter - Builder  
Alterations  
North 7-3851  
373 Bloomfield Ave., Nutley  
2-24 TF

**AA1 SCREENED TOP SOIL**  
From nearby farms. Bushel,  
yard of load. Also fill dirt. E.  
Miller, telephone North 7-3854,  
after 5 p.m. weekdays; anytime  
weekends. 3-22-62TF

## ALUMINUM SIDING

**IPPOLOIT CONSTRUCTION** -  
Aluminum siding, awnings, and  
windows. Also stone fronts. Guar-  
anteed work. Fair prices. Tele-  
phone North 7-344 for free esti-  
mates. 4-6-61 TF

**WE SPECIALIZE** in Aluminum  
siding, aluminum awnings, win-  
dows, doors, facades, porch  
enclosures. Kitchen remodeling  
and home improvements. A. L.  
Work Guaranteed. Glen - Field  
Aluminum Products, Inc., North  
7-2823. 2 TF

## ALUMINUM REPAIRS

**ALUMINUM GLASS** and screens  
repaired; also headquarters for  
saddles, door closers, window  
chains, knob sets, grilles, etc.  
KING OF BELLEVILLE, 164  
Washington Ave., Belleville,  
PL 9-1161 1-12-61TF

## ALUMINUM WINDOWS

**NEW ALUMINUM**  
STORM WINDOWS  
specially priced. Nutley Key and  
Glass, 68 Franklin Avenue, Nut-  
ley, Call North 7-5405. 2-8-62 TF

**T.K. OAKES** - heavy duty alu-  
minum welded storm windows,  
guaranteed - factory to you.  
Normal sizes \$14.95, including in-  
stallation. Also gutters, leaders.  
Painting. Demonstrations cheer-  
fully given. North 7-2564 before  
8:45 a.m. or evenings. 3-15-62TF

## Announcement

**ATTENTION!** For that new look  
in clothes, call P. L. A. 2  
**FRENCH CLEANERS**, 239 North  
Street, North 7-2105. Same  
Day Service. Free Motherproofing.  
4-29-59 TF

## AUTO SERVICE

**COLLISION SPECIALISTS**  
STRAIGHTENING, PAINT-  
ING, lacquer, enamel, metal, El-  
ectric welding, chassis work. Re-  
build glass work. AL'S RIVER-  
SIDE, O. D. V. & FENDER  
WORKS, 21 Valley Street, Belle-  
ville, PL 9-1162. 12-27-59 TF

**SPECIALISTS: IGNITION**  
MOTOR TUNE-UP, Carbure-  
tor, Verstan, 197 Franklin  
Avenue (near Center) - Dis-  
tributors for LECTRA - Pur-  
tignone. Open weekdays 4-30  
to 9 P.M., Saturday, 8:30 A.M.  
to 9 P.M. 6-29-59 TF

## AWNINGS

**ALUMINUM AWNINGS**, door  
hoods, patio covers, stationary  
or roll-up, sold and installed, al-  
so iron railings. Call King of  
Belleville, 164 Washington Ave.,  
Plymouth 9-1161. 9-28-61 TF

**Custom-Made Window Shades**  
Aluminum Blinds  
Canvas Awnings  
LEPRELLE - AWNINGS  
524 Franklin Ave. North 7-4351  
4-6-61 TF

## DECORATORS PAINTERS

**PAINTING AND PAPERHANG-  
ING** - inside and outside work.  
Carpentry, light plaster and cab-  
inet work - all odd jobs. Call  
North 7-5312 4-26-62 TF

**INTERIOR AND EXTERIOR  
PAINTING** by a reliable  
contractor. Ceilings painted. Es-  
timates cheerfully given. Call Mr.  
Whitaker, 680 Franklin Avenue.  
-NO 7-6040. 8-25-60TF

**RELIABLE  
PAINTING AND DECORATING**  
Interior Exterior  
Free Estimates - Fully Insured  
North 7-1447  
Plymouth 9-7372  
4-19-62 TF

**LIVE BETTER ELECTRIC**  
ALLY with full housepower.  
For free estimate phone Lar-  
son's Electric Service, 658 Belle-  
ville Avenue, Belleville. 24  
hour answering Service. Ply-  
mouth 9-2822. 8-25-57 TF

**ALTERATIONS AND REPAIRS**  
remodeling, roofing, siding,  
doors, porches, finished re-  
creation basements. Free es-  
timates. DiPetta Builders, North  
7-2751. 7-17-58 TF

**A. COLLINS** - Carp-  
enters and Builders. Kitchen,  
Attic, Basement remodeling.  
Roofing and Siding. Also Alu-  
minum combination storm doors  
and windows. All work covered  
by insurance. Established 1939.  
North 7-4730. 1-21-60TF

**LINDSTROM BROTHERS**, shop,  
311 Broad Street, Bloomfield.  
Roofing, overhead doors, breez-  
ways, porches, screens, general  
home maintenance, kitchen cab-  
inets, alterations, additions.  
Free estimates. Telephone NO  
7-8299 or NO 7-7243. 4-21-56 TF

**L. VITALE & SONS** - 78 Baldwin  
Place, Belleville. Masonry. Ge-  
neral Contractors. Alterations  
and Extensions. Concrete sid-  
ewalks and driveways. Brick and  
stone steps and fronts. Special-  
ly. Free estimates. Plymouth  
9-3064. 4-19-62 TF

**R. J. STATEWIDE CONSTRUCTION CO.** - We do Aluminum  
siding, extensions, basements,  
dormers, attic conversions, lead-  
ers & gutters, kitchen remova-  
tions, remodeling, alterations. Free  
estimates. Call anytime. ED 8-  
9459. 4-12-62 TF

**R. DE CHIARA, DORMER AND  
EXTENSION SPECIALISTS**  
FREE ESTIMATES. PLY-  
MOUTH 1-211. 8-2 TF

**CARPENTER AND CABINET  
MAKER**. Custom built. Kitchen  
cabinets, finished basements and  
attics. Alterations. Free es-  
timates. Call Mike Lencioni, Ply-  
mouth 9-7354. 8-2 TF

## CHILD CARE

**EXPERIENCED**, dependable,  
available baby sitter. Nights  
and weekends. Call after 4 p.m.  
NO 7-7116. 8-2 TF

**FRANCISAN SISTERS OF ST.  
ELIZABETH NURSERY**, Free  
Franklin Avenue, Nutley. Ages  
5 years. Hours 7 A.M. to 5 P.M.  
Playroom, dining room, recrea-  
tion room with TV and stereo.  
Phone records. Hot lunch at 12  
P.M. Nap 12:30 P.M. Snacks at  
2 P.M. North 1-0919. 1-26-61 TF

**CAPABLE MOTHER** wishes to  
mind child in her home for  
working mother. Best references.  
Located near St. Mary's School.  
Telephone North 1-1621. 2 TF

## DECORATORS PAINTERS

**DOM INNAMORATO** - Painting  
and Paperhanging. Long ex-  
perience. Clean, neat work. Es-  
timates given. Pilgrim 3-5154.  
12-22-60TF

**SPECIAL** - I will hang the  
paper in any average size  
room for only \$8.95. D. D.  
EMILIO, 12 Brown St. Tele-  
phone North 7-9325. 2 TF

**DOES YOUR HOUSE NEED  
PAINTING?** John Graczyk  
General Contractor. Interior and  
exterior painting. Fully insured.  
Free Estimates. Telephone NO  
7-4469. 7-30-59TF

**THREE BEAUTIFUL ROOMS**  
the kitchen, the bath, heat and  
water supply. Available  
month. One child welcome. 53  
Joralemon Street. Inquire first  
floor after 6. 2 TF

**THREE ROOM APARTMENT**  
FOR RENT. Heat, hot water,  
electricity, gas supplied. 38 Ideal  
Court, Nutley, North 7-3408. 2 TF

## FOR RENT

"Offices for rent. One or three rooms.  
divide to suit. Rent very reasonable. Available  
immediately. The Nutley Sun Building.  
For details call Mrs. Wilkinson, North  
7-2100." -NO 7-6040. 8-25-60TF

## FOR SALE

1951 CHEVROLET Radio and  
Heater; Good running condition.  
Good rubber; \$95. Call North  
7-0612.

**USED DESKS, \$15 & UP.** Filing  
cabinets, chairs and tables.  
Eldstein Office Furniture Ware-  
house, 200 Montgomery Street,  
Paterson, N. J. Lamont 3-4338.  
5-26-60TF

**BATHROOM** - Vanties; tormi-  
ca covered; factory show room  
discounts, buy direct from man-  
ufacturer. Perma Co. 58 Mil-  
St. Belleville, PL 9-1600. 7-30-61TF

**MATTRESSES** - A complete line  
of name brands, mattresses  
and box springs. Made to order,  
any size. Renovating - Same day  
service. Maple Furniture. Cus-  
tom Mattress Makers, 85 Frank-  
lin Avenue, Nutley, North 7-7944.  
9 A.M. to 8 P.M. daily - Satur-  
day 9 A.M. to 6 P.M. 5-16-61 TF

13-Have your roof, gutters  
leaders and flashings inspect-  
ed. Any small, minor repair in-  
cluded. Aluminum combination  
windows and doors. General  
home maintenance. Please call  
before 8:30 A.M. or after 6 P.M.  
T. K. Oakes, North 7-2564. 4-25-58 TF

**SALE ON SLIPCOVERS**  
Upholstery and custom made  
draperies. 8 piece slip cover,  
zippers, welting. Expert work  
large. \$69.00.  
Manga, selection of dress ma-  
terials, curtains, trimmings.  
Visit our store -  
See materials galore.  
RIDGE FABRIC CENTER  
397 Ridge Road, No. Arlington  
WY 1-0087. 9-23-61 TF

**LIGHTING SPECIALTIES**. Need  
low priced fluorescent fixtures?  
We stock over 50 types. 6 to 48  
inch long. Want table lamps  
mounted, repaired, made taller?  
No. Call. Need lamp or fluorescent  
parts? SHOPLITE, 650 Franklin  
Ave. NO 7-6021. 4-26-62 TF

**TUB ENCLOSURES AND SHOW-  
ER DOORS**. Special clearance  
sale of standard tub enclosures  
and shower doors. Choice of de-  
sign. Expert installation. Call for  
free demonstration. North 7-0253  
or North 7-0039. 10-5-61 TF

**WE BUY AND SELL PICTURES**,  
dishes, clocks, bric-a-brac, used  
furniture, gun swords, etc. 353  
Main Street, Belleville. Ply-  
mouth 9-1188. 6-28-62 TF

**FRIGIDAIRE 13 CUBIC FEET**,  
70 pound freezer-like new. Re-  
frigerator. Call evenings after 6.  
Plymouth 9-2893. 7-12-62 TF

**SEWING MACHINE** - Singer.  
Console. In perfect condition.  
\$15. Can be seen by appointment.  
Call North 7-1463 between 5 P.M.  
and 6:30 P.M. 7-26 TF

**G. E. REFRIGERATOR**, reason-  
able. Call North 7-4412.

**MUST SELL** - Moving to small-  
er quarters - beautiful blond  
dining room set - 9 pieces - per-  
fect condition. Pink Norge ref-  
rigerator, other items. Call after  
6:30. North 7-4832.

**FORD 1958 convertible** low mil-  
age; V8 auto; R&H; must be  
seen to be appreciated; loaded.  
North 7-5997.

**20 PIERCE WHITE TRANSLUCENT**  
China sets, \$16.95. China  
TV sets, \$10.00 each. Filomena's,  
198 Chestnut St., Nutley. 8-2 TF

**HAIR SPRAY**, popular brands,  
professional size - cut-rate  
prices. Four Seasons Hairdress-  
ers, 200 Chestnut St., Nutley. 8-2 TF

## FOR RENT

"Offices for rent. One or three rooms.  
divide to suit. Rent very reasonable. Available  
immediately. The Nutley Sun Building.  
For details call Mrs. Wilkinson, North  
7-2100." -NO 7-6040. 8-25-60TF

## FOR SALE

1951 CHEVROLET Radio and  
Heater; Good running condition.  
Good rubber; \$95. Call North  
7-0612.

**USED DESKS, \$15 & UP.** Filing  
cabinets, chairs and tables.  
Eldstein Office Furniture Ware-  
house, 200 Montgomery Street,  
Paterson, N. J. Lamont 3-4338.  
5-26-60TF

**BATHROOM** - Vanties; tormi-  
ca covered; factory show room  
discounts, buy direct from man-  
ufacturer. Perma Co. 58 Mil-  
St. Belleville, PL 9-1600. 7-30-61TF

**MATTRESSES** - A complete line  
of name brands, mattresses  
and box springs. Made to order,  
any size. Renovating - Same day  
service. Maple Furniture. Cus-  
tom Mattress Makers, 85 Frank-  
lin Avenue, Nutley, North 7-7944.  
9 A.M. to 8 P.M. daily - Satur-  
day 9 A.M. to 6 P.M. 5-16-61 TF

13-Have your roof, gutters  
leaders and flashings inspect-  
ed. Any small, minor repair in-  
cluded. Aluminum combination  
windows and doors. General  
home maintenance. Please call  
before 8:30 A.M. or after 6 P.M.  
T. K. Oakes, North 7-2564. 4-25-58 TF

**SALE ON SLIPCOVERS**  
Upholstery and custom made  
draperies. 8 piece slip cover,  
zippers, welting. Expert work  
large. \$69.00.  
Manga, selection of dress ma-  
terials, curtains, trimmings.  
Visit our store -  
See materials galore.  
RIDGE FABRIC CENTER  
397 Ridge Road, No. Arlington  
WY 1-0087. 9-23-61 TF

**LIGHTING SPECIALTIES**. Need  
low priced fluorescent fixtures?  
We stock over 50 types. 6 to 48  
inch long. Want table lamps  
mounted, repaired, made taller?  
No. Call. Need lamp or fluorescent  
parts? SHOPLITE, 650 Franklin  
Ave. NO 7-6021. 4-26-62 TF

**TUB ENCLOSURES AND SHOW-  
ER DOORS**. Special clearance  
sale of standard tub enclosures  
and shower doors. Choice of de-  
sign. Expert installation. Call for  
free demonstration. North 7-0253  
or North 7-0039. 10-5-61 TF

**WE BUY AND SELL PICTURES**,  
dishes, clocks, bric-a-brac, used  
furniture, gun swords, etc. 353  
Main Street, Belleville. Ply-  
mouth 9-1188. 6-28-62 TF

**FRIGIDAIRE 13 CUBIC FEET**,  
70 pound freezer-like new. Re-  
frigerator. Call evenings after 6.  
Plymouth 9-2893. 7-12-62 TF

**SEWING MACHINE** - Singer.  
Console. In perfect condition.  
\$15. Can be seen by appointment.  
Call North 7-1463 between 5 P.M.  
and 6:30 P.M. 7-26 TF

**G. E. REFRIGERATOR**, reason-  
able. Call North 7-4412.

**MUST SELL** - Moving to small-  
er quarters - beautiful blond  
dining room set - 9 pieces - per-  
fect condition. Pink Norge ref-  
rigerator, other items. Call after  
6:30. North 7-4832.

**FORD 1958 convertible** low mil-  
age; V8 auto; R&H; must be  
seen to be appreciated; loaded.  
North 7-5997.

**20 PIERCE WHITE TRANSLUCENT**  
China sets, \$16.95. China  
TV sets, \$10.00 each. Filomena's,  
198 Chestnut St., Nutley. 8-2 TF

**HAIR SPRAY**, popular brands,  
professional size - cut-rate  
prices. Four Seasons Hairdress-  
ers, 200 Chestnut St., Nutley. 8-2 TF

## GUTTERS LEADERS

**HAVE YOU CHECKED YOUR  
GUTTERS** and leaders lately?  
Let us do it for you. Aluminum  
leaders and gutters sold and in-  
stalled by KING OF BELLE-  
VILLE, 164 Washington Avenue.  
Plymouth 9-1161. 1-19-61TF

## HEARING AIDS

**SOUTH BERGEN  
HEARING AID CENTER**  
Little's Pharmacy  
547 Franklin Avenue  
Batteries & Accessories, Repairs  
All Makes of Hearing Aids  
North 7-0822 GENEVA 9-042  
9-28-61 TF

## HELP WANTED

**Acct. Clerk** 75  
Clerical typist exp. nec. 359  
Clerical P-T 159  
Guards Day & Night 139  
Mach. Oper. 1.75  
Shipping & Inv. Clerk 1.75  
Power Press Oper. Exp. 1.75  
Inventory Control 6070  
Tool Driver 1.50  
Shipper & Prod. 1.60  
Painter 1920  
Bench Work 2.00  
Load & Unload Trucks 2.00  
Cord Winders 837  
Assemblers 2.00  
Export Traffic Clerk, typing 85  
Trainees-Wiring 1.00  
Transformers 6580  
Elec. Engr. Mech. 6580  
Routemen, Wholesale 104  
FEMALE  
Asst. Bkpr., type 700  
Bookkeepers: P. C. 700  
Legal Secretary 80  
Office Girl 55-65  
Personnel Typist 70  
Billing Clerk 70  
Payroll Clerk 70  
Dictaphone Oper. 70  
Calculator Oper. 70  
P. T. Steno. Typist 2.00

**DEE OF KEARNEY**  
Employment Agency  
232 Belleville Pike-Wyman 1960  
Open Mondays till 7 P.M.

**LANE EMPLOYMENT AGENCY**  
Accountants  
Bookkeepers  
Claims  
Secretaries  
Clerk-Typists  
Junior Clerks  
Stenographers  
Trainees

530 Franklin Ave., Nut. NO 7-3556  
790 Broad St., Nwk. MA 24065  
Hours Mon. thru Fri. 9:30 -  
3:30 P.M. Mon. evening 7:45 P.M.  
2-12-62 TF

**CLERK TYPIST-PURCHASING**  
Good typist, working knowledge  
of simple arithmetic; excellent  
employee's benefits. Unusu-  
ally working conditions. Write  
Box 86, The Belleville Times, 26  
Washington Avenue, Belleville,  
N. J., stating qualifications and  
salary desired. 8-2

**WOMAN SUPERVISOR** for Nut-  
ley and nearby. Cosmetic and  
Household product sales expe-  
rience preferred. Salary, paid va-  
cation and fringe benefits. Unusu-  
ally working conditions. Write  
Box 86, The Belleville Times, 26  
Washington Avenue, Belleville,  
N. J., stating qualifications and  
salary desired. 8-2

## HELP WANTED FEMALE

**WOMAN SUPERVISOR** for Nut-  
ley and nearby. Cosmetic and  
Household product sales expe-  
rience preferred. Salary, paid va-  
cation and fringe benefits. Unusu-  
ally working conditions. Write  
Box 86, The Belleville Times, 26  
Washington Avenue, Belleville,  
N. J., stating qualifications and  
salary desired. 8-2

**I CARRY A MODEL'S HATBOX**  
and show lovely jewelry. I feel  
glamorous and I make money.  
Want some? Call me ev-  
enings. North 7-0742. 8-2

**SIX OPERATORS PART TIME**  
on sewing machines mending  
work clothes. Hours: 7 to 11:30  
a.m.; 11:30 a.m. to 3:30 p.m. In-  
terviewing Monday and Tuesday.  
The Great A & P Tea Co., Inc.,  
265 Cortlandt St., Belleville, N.J.  
8-2

**WOMAN TO DO GENERAL**  
housework, laundry & ironing  
5 days week. References. Call  
North 7-8050.

**MATURE WOMAN FOR BABY  
SITTING**. Hours 3:30 to 7:30.  
Monday through Friday. Ex-  
cellent salary plus car fare. Steady  
position. Call after 7. Plymouth  
9-7455.

**WOMAN, housekeeper for two  
people. Live in. Good wages.**  
Call North 1-9490 between 9 and  
5 P.M. 7-26 TF

**NEW IN TOWN?**  
Like to get to know your  
neighbors? Avon Representatives  
meet new and interesting people  
daily, while selling AVON'S line  
of over 200 products. Excellent  
earning opportunity. Call Mrs.  
Jones, MI 2-3146 for home in-  
terview. 8-2

## IMPROVED HOMES

**FORMICA SINK TOPS**, custom  
kitchen cabinets. Complete job.  
Call GR 1-0755 7-19 TF

## HOMES IMPROVED

**FURNITURE EXPERTLY RE-  
FINISHED** or repaired - cigar  
ette burns our specially - reason-  
ably priced. Estimates cheerfully  
given. Call Plymouth 9-5156 for  
appointment. 7-19 TF

**ALCOA - REYNOLDS** alu-  
minum Clapboard, siding, Roofing,  
Gutters, Leaders, Windows, car-  
pentry alterations. Satisfaction  
guaranteed. Heights Construction  
Co., 150 Kingsland Street, Nutley  
Call Joe Lazar, North 7-6940. 3-30-61TF

**F. K. ROOFING AND SIDING**  
Aluminum siding, asbestos sid-  
ing, leaders, gutters, painting,  
overhead garage doors, asphalt  
driveways, carpentry. Plymouth  
9-2795 or WYman 1-9201. Free  
estimates. 10-5-61 TF

**EASY WAY DRIVING SCHOOL**  
Licensed by N. J. Division of  
Motor Vehicles. Approved by A.  
A.A. and Department of Educa-  
tion. -Plymouth 9-8774 or North  
7-8390. 1-12-62 TF

**PIANO INSTRUCTIONS, SUM-  
MER RATE**. North 7-3855. 7-28 TF

**QUALIFIED TUTORING** and re-  
medial reading and other ele-  
mentary subjects. Also high  
school science and math. Call  
Plymouth 9-8237. 8-2 TF

## JUNK DEALERS

**FRANKIE'S SALVAGE** - Pick  
up paper, rags, metal, mat-  
tresses, sink, bathtubs and fur-  
niture. Clean cellars. Telephone  
Plymouth 9-2513. 3-14-57 TF

**BRING IT IN**. Copper, brass, alu-  
minum, lead, batteries, cast  
iron, steel, paper, 50c a  
hundred (lbs.) rags. Top pri-  
ces. Kearny Scrap Metal, 11 Stov-  
er Avenue, Kearny, WYman 1-  
0432. 2 TF

**ATTENTION!** We pay top prices  
for papers & magazines (50c  
per hundred). Brass 15c/lb., Lead  
6c. No. 1 Copper 35c. No. 2 25c.  
Cast Iron \$1 per hundred. Del-  
ivered. Also buyers of steel, bat-  
teries, and junk cars. J. Resciniti,  
36 Clinton St. Belleville, Ply-  
mouth 9-4408. 9-26-61 TF

**ATTENTION!** Call your local  
man for papers and magazines,  
scrap iron and metal. Old sinks,  
radiators and bathtubs. Call J.  
Luby & Co., North 7-3768. 1-18-62 TF

## LANDSCAPING

**COMPLETE LAWN CARE**. Role-  
tilling, shrubs and evergreens  
delivered and planted. Call ev-  
enings North 7-5732. 4-12-62 TF

## LAWN MOWERS

**HAND, POWER MOWERS** - All  
BRANDS, types sharpened, re-  
paired, reconditioned by factory  
trained men. Also saws, hand  
tools sharpened. Work guaran-  
teed. 5-4-61 TF

## WHITE OAKS HARDWARE

78 Union Avenue, North 1-1040  
5-17-62 TF

**AGENTS FOR**  
Briggs & Stratton,  
Clinton, Lawson  
Power Products  
Complete Parts department  
HAND & POWER MOWERS  
Sharpened and adjusted  
All Work Guaranteed  
NUTLEY KEY & GLASS  
483 Franklin Ave. NO 7-5405  
2-8-62 TF

**LAWN MOWERS - SAWS**  
SNOW BLOWERS  
SALES SERVICE  
Power Tools Repaired  
AUTHORIZED SERVICE  
Briggs & Stratton  
Lauson - Power Products  
Lawn Boy  
COMMUNITY TOOL REPAIR  
39 Franklin Avenue, Nutley  
North 1-1504  
3-31-61 TF

**SALES, SERVICE,  
SHARPENING**  
Authorized dealer in Briggs &  
Stratton and Tecumseh Engines.  
Moto Mower and Simplicity pow-  
er equipment. Repairs on all  
makes.<



**SERVICE**

IT REALLY PAYS TO REPAIR your old appliances. Fans, washers, irons, lamps, etc. Guaranteed repairs, sensible low prices. Phillips, Monroe and Myrtle, Pascale. GREGORY 3-5567. 12-8-60 TF

Batteries & Accessories, Repairs All Makes of Hearing Aids SOUTH BEIRGIN REPAIRING CENTER 447 Franklin Avenue NORTH 7-0322 GENEVE 8-1042 12-22-54 TF

YARDS, basements, attics and garages cleaned; prompt service; reasonable price. Call Plymouth 1-0646 or Plymouth 1-2299. 6-28-62 TF

AIR CONDITIONING and appliance service; all makes re-paired. work fully guaranteed. Plymouth 9-8122. 6-28-62 TF

ALL MAKES AUTOMATIC WASHERS, DRYERS, REFRIGERATORS, FREEZERS, air conditioners repaired. Factory serviced Philco and Bendix service. 16 years experience. E. Crossley Service. NO 7-9278. 3-6-58 TF

RONNIE'S TRUCKING — We clean Yards, Attics, Cellars and Factories. Moving, hauling, painting inside or outside and repairs. Reasonable prices. No job too small. Plymouth 9-5897. 5-3-62 TF

A-1 PIANO TUNING — Repairing and polishing, players a specialty. Factory expert since 1910. All work guaranteed. Giglio, 205 Forest Street, Belleville. Telephone Plymouth 9-2614. 5-10-62 TF

FU-MIL TRUCKING — Can we clean your attic, cellar or with high hauling work? A small crew available. No job refused. Call anytime North 7-6279. 5-17-62 TF

PASSAIC PRIVATE NURSING HOME, for chronically ill, convalescent and bed-ridden male and female, day and night nurses. Telephone PHILADELPHIA 9-0028. 2-9-66 TF

SPECIAL DOMESTIC WOOL CARPET 9x12; wall to wall carpeting, 7 cents a square foot; 20 years of satisfied service. The Gary Service, North 7-8877.

**SEWING MACHINES**

ANY MAKE OR MODEL expertly repaired. Estimate \$1. New and used sewing machines, \$19.50 and up. P. Wissing, 82 Watchung Ave., Upper Montclair, PL1911 6-1581. 1-4-62 TF

**SHORING**

SAGGING WALLS, floors, partitions, front porches, garages and overhanging roofs, jacked up to proper level. Underpinning of masonry walls, also general contracting, Millwright and Rigging. All work guaranteed and insured. HARRY CARMERMAN WYman 1-4622—Humboldt 2-5899. 6-8-61 TF

**TELEVISION**

TELEVISION REPAIRS — All Video Service, 31 Holmes St., Nutley, North 1-253 weekdays after 5:30 P.M., all day Saturday, Sunday, Repairs and good will guaranteed. 5-5-60 TF

**TILE CONTRACTORS**

MARALDO Tile & Terrazzo Co. Industrial-Commercial Residential-Repairing 62 Union Avenue North 7-3021 12-15-60 TF

SCORDO TILE — Ceramic tiling for kitchens, bathrooms, patios, etc. Wet or dry wall installation. Joseph Scordo, 35 Mt. Pleasant Avenue, Belleville. Plymouth 9-0477. 8-2

**TREE SERVICE**

WEISCHENDEL'S TREE SERVICE. ICE Insured. Telephone NO 7-0965. 6-11-59 TF

CAPRON TREE SERVICE — Trees trimmed and removed. Call North 7-5794. If no answer North 7-4639. 4-17-62 TF

**UPHOLSTERY**

SLIP COVERS and UPHOLSTERY, custom work at low prices. "The Little Shop with the Big Values." Czech Decorators, 196 Mill St., Belleville. Plymouth 9-6201. 10-5-61 TF

SLIP COVERS — reupholstering new upholstered pieces of any workmanship, wide variety of samples. Nicholas Spirko, 421 Franklin Avenue. Telephone North 7-2529. TF

**WANTED TO BUY**

CLEAN WHITE RAGS. Large pieces, no buttons or other fasteners. — 30 cents per pound. Bring to The Nutley Sun, 386 Franklin Avenue, Mondays or Thursdays only. TF

## The Onyx Room, Town's Only Night Club, Features Entertainment, Informality

By JOHN NICOLOSI

An ultra-modern atmosphere, coupled with reasonable buffet lunches and nightly entertainment, have sparked the Onyx Room at 378 Centre Street into being one of Nutley's most patronized spots.

Upon entering the lavish cocktail lounge patrons pause to allow their eyes to adjust to the

subdued lighting and black and gold decor. The comfortable lounge and informality which makes for a better time.

The owner, Josephine Christino, of Montclair, works hard to make certain that her customers are pleased with the food and drink.

From 11:30 a.m. until 2 p.m. on weekdays, a buffet luncheon

is served. Each person pays \$4.50 for all he or she can eat. Since the buffet was started several months ago, the Onyx has become one of the favorite lounge spots for men and women.

A full selection of cold cuts and home-made salads is spread over a table elevated a few inches above the floor at the rear of the lounge. A serve-yourself policy is adhered to, both at the buffet and the bar.

Entertainment spices the goings on every Wednesday, Friday, Saturday and Sunday night. The Madcaps featuring Johnny "Vagabond" Carpio, Billy Upland, and Betty Johnson, provide all types of music including the "twist". Other featured artists also appear Friday and Saturday nights.

Each afternoon for cocktails, Mrs. Christino, or Jo as she is called by patrons, tends bar. Cocktail hour is from 5 to 7 p.m. During cocktail hour Saturday and Sunday's after 5 p.m., hors d'oeuvres are served. Sandwiches and snacks are served every night.

The Onyx Room catch line, "Ultimate in the Informal", is well chosen.

## Local Girl Scouts Leave For Triennial

The triennial Senior Scout Roundup which opened in Vernon on Monday, Thursday, and will continue until July 31, is the largest single national event sponsored by Girl Scouts, U.S.A. It will be the culminating event of this year's 50th Anniversary of Girl Scouting.

"Roundup is also the culmination of a Senior Scout's experience," observed Mrs. Bruce Cole of 425 Prospect Street, Nutley. Mrs. Cole is Roundup patrol area coordinator for Nutley-Belleville Girl Scouts.

Nutley Senior Scouts, chosen to attend Roundup, are Carolyn Irwin of 125 Lakeside Drive, Carolyn, 94 Edison Avenue, Carol McDonough, 75 High Street and Jane Mickens, 35 Park Avenue. Sharon McQueeney, 115 Lakeside Drive is an alternate setter.

Belleville Senior Scouts, represented in the same patrol, are Mary Jane Gaffney of 12 Bell Street, member of a Nutley troop, and Barbara Regula of 39 Little Street, member of a Belleville troop.

The purpose of the Senior Roundup is to bring together girls of various ages, national origins and creeds in order to share a rich camping experience and a wide selection of activities.

The campers will stage demonstrations illustrating typical features of their respective region or country. These will include folk dancing, singing, cooking and demonstrations of local occupations and industries, from weaving to Western branding. Each girl will bring to Roundup small items representative of her community to trade with other girls.

The role of women in the future will be discussed in the course of four youth forums on human relations and world affairs. The girls will also engage in such pursuits as arts and crafts, photography, meteorology and news reporting any of which may suggest career possibilities.

As part of their service to the future, the girls will undertake planting trees in the still undeveloped Button Bay State Park, situated in Vermont on the shore of Lake Champlain.

It is anticipated that approximately 30,000 visitors, most of them parents and friends of the

campers, will visit the Roundup area during the encampment period. It is suggested by Mrs. Cole that prospective visitors from this area make a note of the visiting hours in order to avoid disappointment.

The hours are from 10 a.m. to noon, and 2 to 4 p.m., July 29 through 29. Early reservations are also recommended for overnight stays at inns, hotels or motels in the area.

## Dr. No Name Is Printed; Written By La Torraca

Gerald La Torraca, a native of Newark, and a former barber, has had his first book, "Dr. No Name" published by the Vantage Press in New York.

He is presently chairman of the New Jersey State Board of Barber Examiners, and is active in youth activities.

In "Dr. No Name" La Torraca presents his legend of the world leaders playing the role of doctors.

The book is on sale at book stores at \$3.50 per copy.

## Colonels Split Two

The Colonels of the Essex County Semi-Pro Baseball League split over the weekend, losing Saturday to Maplewood, and winning Sunday over the South Orange Colts.

The Colonels dropped Saturday's game to the Maples 6-1. It was the 12th loss registered by the Colonels their fifth in a row. They are in fourth place in the league standings.

On Sunday, a 6-3 tie in the 11th inning was broken by a home-run by Player-Manager Jim San Giacomo. The round-

tripper broke the tie and provided the winning run for the Colonels.

Denny Dębrowski hit a home run for the Colonels in the first inning of Sunday's game. Tony Paloma was the winning pitcher. He relieved Jim Liccardi in the seventh.

This week's schedule slates the Orioles at Park Oval tonight at 8:15 p.m.; West Orange at the Oval tomorrow night; the Colonels at West Orange, Saturday; and Caldwell at Park Oval Sunday and Tuesday.

# BEST BUDS!



## LANCASTER BRAND TOP or BOTTOM ROUND ROAST

Get FREE 50 S&H Green Stamps with the purchase of any Round Roast and Coupon below.

lb. **79¢**

**FREE 50 S&H GREEN STAMPS** in addition to your regular stamps with purchase of a **ROUND ROAST**

Name \_\_\_\_\_

Address \_\_\_\_\_

Expires Sat., July 21, 1962

Use in: Grocery, Per Shopping Family.

<b>TOP SIRLOIN</b>	Lancaster Brand Boneless Roast	lb.	<b>99¢</b>
<b>EYE ROAST</b>	Lancaster Brand Boneless	lb.	<b>1.09</b>
<b>GROUND ROUND</b>	Lancaster Brand	lb.	<b>99¢</b>
<b>LAMB ROAST</b>	Lancaster Brand Shoulder (square cut)	lb.	<b>29¢</b>
<b>LANCASTER BRAND STEAKS</b>	SIRLOIN	lb.	<b>89¢</b>
	PORTERHOUSE	lb.	<b>99¢</b>
<b>SMOKED CALAS</b>		lb.	<b>33¢</b>
<b>CANNED CHICKEN</b>	Lancaster 3 lb. 3 oz. Brand can		<b>99¢</b>

## FREE Boloro THERM-O-TUMBLER

LIFETIME LEAKPROOF SEAL

with purchase of 15 or more Redeem coupon below now! Next week secure 1 tumbler for 29¢ and each \$5 purchase and newspaper coupon. 8 COLORS One color each week.

**FREE BOLORO THERM-O-TUMBLER** with the purchase of 15.00 or more and this coupon

Name \_\_\_\_\_

Address \_\_\_\_\_

Expires Sat., July 21, 1962

Limit 1 coupon per shopping family

Reg. 1.00 Value

Color of the weeks: CORAL

Save On Nationally Advertised Groceries

<b>BUMBLE BEE</b>	White Tuna	3 7 oz. cans	<b>\$1</b>
<b>DELMONTE</b>	Pineapple	4 46 oz. cans	<b>89¢</b>
<b>DOLE DRINK</b>	Grapefruit Drink	4 46 oz. cans	<b>89¢</b>
<b>SOUPS</b>	Pineapple	4 46 oz. cans	<b>89¢</b>
<b>HELLMANN'S</b>	Campbell Chicken Noodle	6 10 1/2 oz. quart	<b>\$1</b>
<b>PEANUT BUTTER</b>	Chicken Rice, Cream Mushroom	6 10 1/2 oz. quart	<b>\$1</b>
<b>SWIFTING</b>	Mayonnaise	1 jar	<b>59¢</b>
<b>BETTY CROCKER</b>	Swifts	11 oz. jar	<b>29¢</b>
<b>SCOTTIES</b>	3c off		
<b>KETCHUP</b>	3 lb. can		<b>59¢</b>
<b>TOMATO JUICE</b>	Scalloped or Au Gratin Potatoes	3 pkgs.	<b>\$1</b>
<b>ALCOA WRAP</b>	Facial Tissues	2 pkgs. of 400	<b>43¢</b>
<b>PARD DOG FOOD</b>	Heinz	3 20 oz. bolls.	<b>89¢</b>
	14 1/2 oz. bolls. 89¢		
	Ideal	4 46 oz. cans	<b>89¢</b>
	12" x 25"	3 for	<b>79¢</b>
		6 6 oz. cans	<b>79¢</b>

## FREE 100 S&H GREEN STAMPS WITH PURCHASE OF \$5 OR MORE AND COUPON AT RIGHT

**FREE 100 S&H GREEN STAMPS** in addition to your regular stamps with purchase of \$5 or more **CREST TOOTH PASTE**

Name \_\_\_\_\_

Address \_\_\_\_\_

Expires Sat., July 21, 1962

Limit 1 Coupon per Shopping Family.

## YOU NEVER HAD IT SO FRESH! THOMPSON SEEDLESS

**Grapes lb. 25¢**

<b>Iceberg Lettuce</b>	Calif. head	19¢
<b>Persian Limes</b>	bag of 6	15¢
<b>Watermelon</b>	Red Ripe	lb. 4¢
<b>Freestone Peaches</b>	3 lbs.	29¢
<b>Blueberries</b>	New Jersey pint box	25¢

Get FREE 30 S&H Green Stamps with purchase of 4 lbs. of Bananas and Coupon below.

<b>FROZEN FOODS</b>		
<b>Orange Juice</b>	LIBBY 7 6 oz. cans	<b>1.00</b>
<b>French Fries</b>	Birds Eye 6 9 oz. pkts.	<b>1</b>
<b>Donuts</b>	Whole Wheat 3 pkgs.	<b>1</b>
<b>Ideal Waffles</b>	Chock Full O' Nuts 3 pkgs.	<b>10¢</b>
<b>Tree Tavern Pizza</b>	2 15oz. 1 pkgs.	<b>1</b>

All prices effective Wed. thru Sat. July 18 to 21. We reserve the right to limit quantities.

**FREE 30 S&H GREEN STAMPS** in addition to your regular stamps with purchase of 4 lbs. of **BANANAS**

Name \_\_\_\_\_

Address \_\_\_\_\_

Expires Sat., July 21, 1962

Limit 1 Coupon per Shopping Family.

BAKERY PEACH or BLUEBERRY **PIES 2 for 1.00** DAIRY **Swiss Slices 3 8 oz. pkgs. 89¢** IDEAL MUENSTER **Cheese Slices 8 oz. pkg. 29¢**

## NOW OPEN NEW MODERN BILLIARD ROOM

## Always Open Bowling At Olympic

## BRING THE FAMILY FOR THE EVENING

679 Washington Ave., Belleville Phone PL 1-2111

No matter what you've been offered

**LEARNARD CHEVROLET**

**WILL BETTER THE DEAL!**

SEE US TODAY

514 Washington Ave., BELLEVILLE  
Open Evenings, Wed. 'til 6. Closed Sundays—PL 9-4200

## OLYMPIC BOWL

## Always Open Bowling At Olympic

## BRING THE FAMILY FOR THE EVENING

679 Washington Ave., Belleville Phone PL 1-2111



TO THE PEOPLE OF NEW JERSEY



THE HOWARD SAVINGS INSTITUTION SAYS—



"Thanks  
Five Hundred  
Million!"

Thank you for helping  
The Howard to be the  
first savings bank in  
New Jersey to reach  
\$500,000,000 in assets!

Thank you for the loyal support which made this achievement possible! Our managers and officers appreciate the fact that it is your splendid record of saving that is reflected in our steady record of growth.

Thank you for the wonderful reception you have given to each of the offices we have opened during recent years. Inspired by your confidence and good will, we shall always endeavor to provide the best of savings bank services and facilities in bright, modern offices where you will find it convenient and pleasant to do your banking.

FULL RATE...NO WAIT

**4%** A YEAR

CURRENT QUARTERLY DIVIDEND

Your savings start earning dividends immediately at the full rate of 4% a year on all balances of \$10 to \$25,000.

DIVIDENDS PAID  
FROM DAY OF DEPOSIT  
COMPOUNDED AND CREDITED  
4 TIMES A YEAR

# The HOWARD SAVINGS Institution

The Largest Savings Bank in New Jersey  
Established 1857

MAIN OFFICE: 768 BROAD ST., NEWARK 1, N.J.

OTHER OFFICES IN NEWARK

Bloomfield Ave. at Clifton Ave. • Springfield Ave. at Bergen St. • South Orange Ave. at Sandford Ave. • Plane St. at Raymond Blvd.

IN SOUTH ORANGE: South Orange Ave. near Lackawanna Station

IN NORTH CALDWELL: 27 Bloomfield Ave. near Mountain Ave.

Insured by the Federal Deposit Insurance Corporation

THURSDAY, JULY 19, 1962